



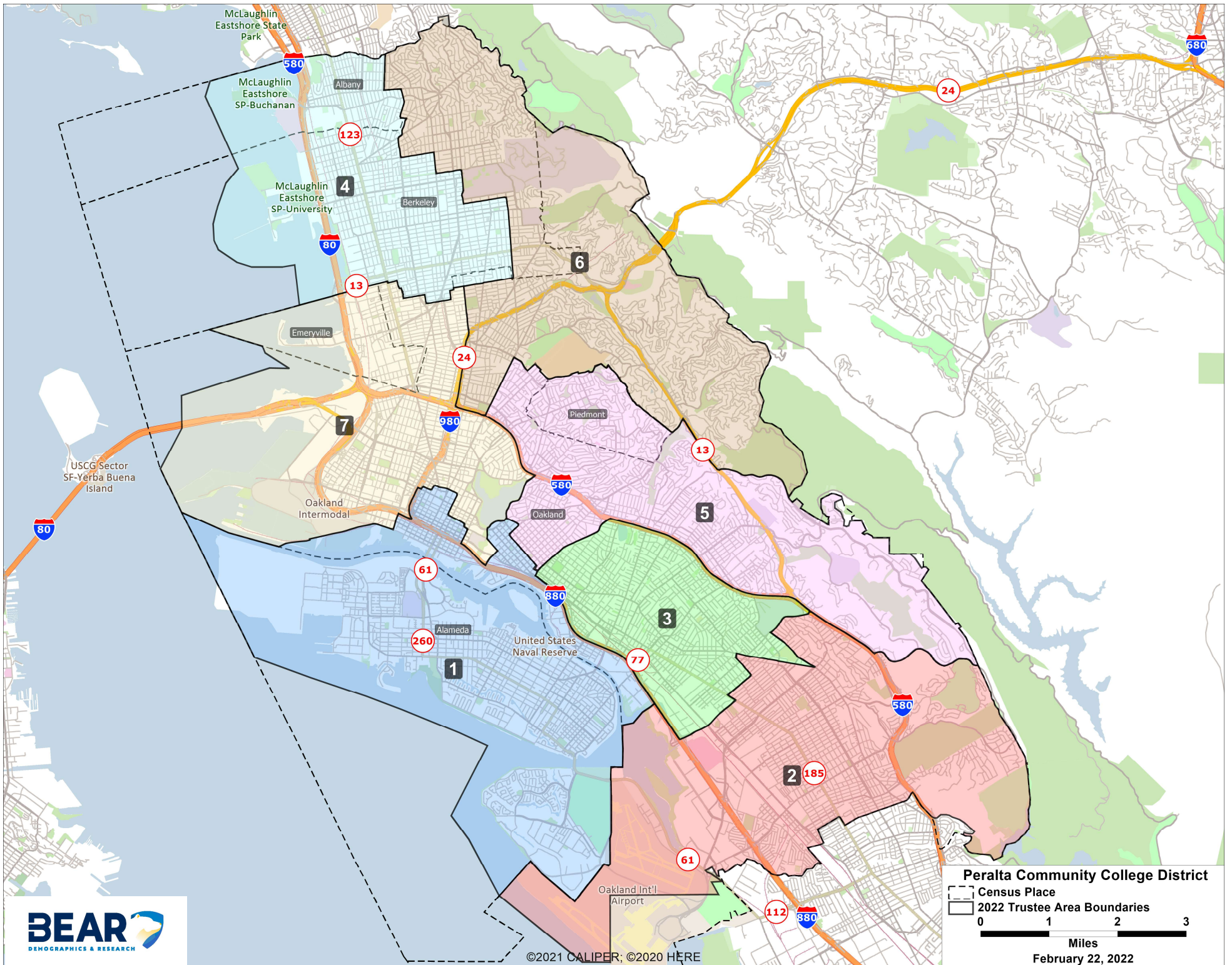
BEAR

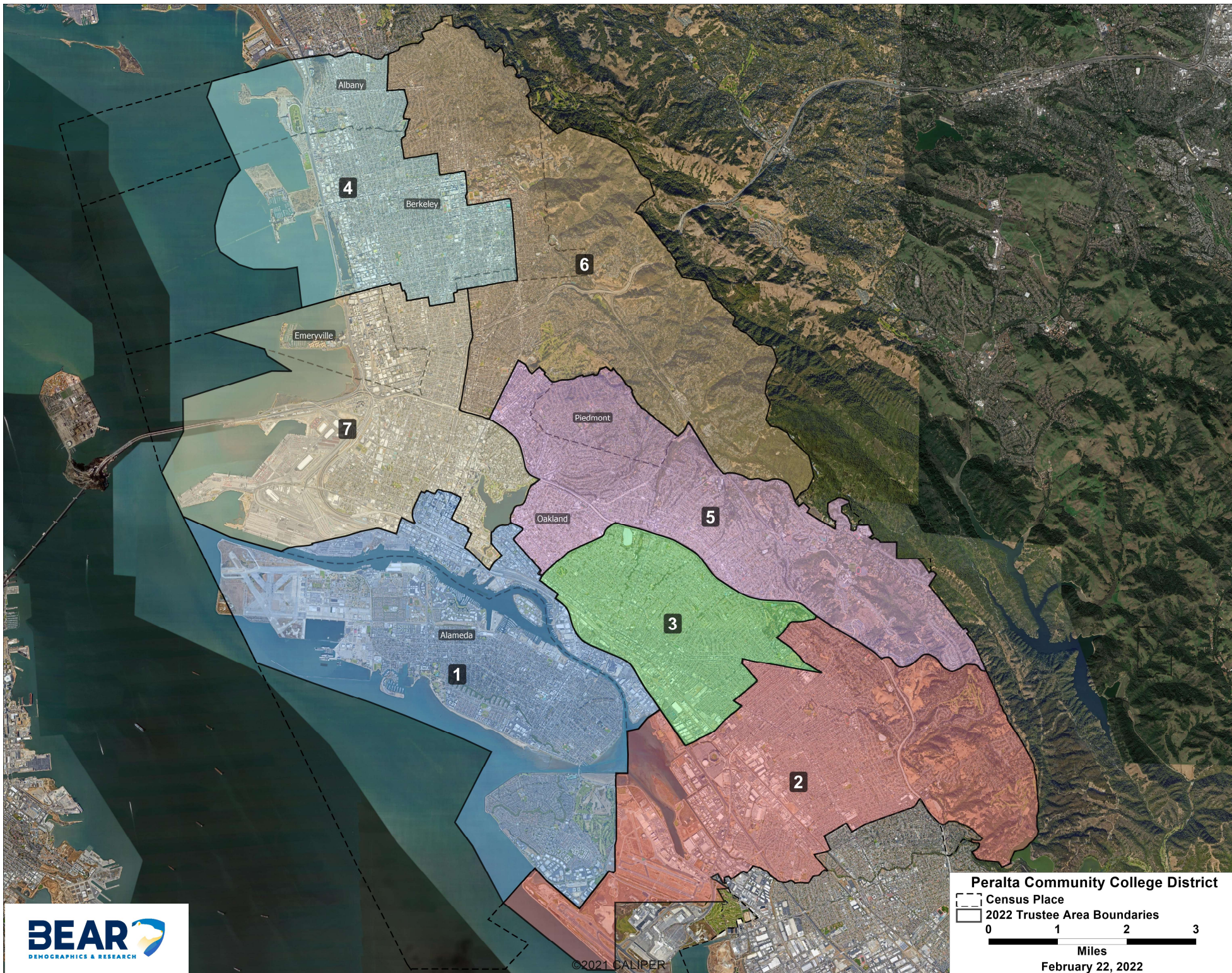
DEMOGRAPHICS & RESEARCH

Peralta
Community College District

2022 Trustee Area Boundaries Final Map

February 22, 2022





©2021 CALIPER

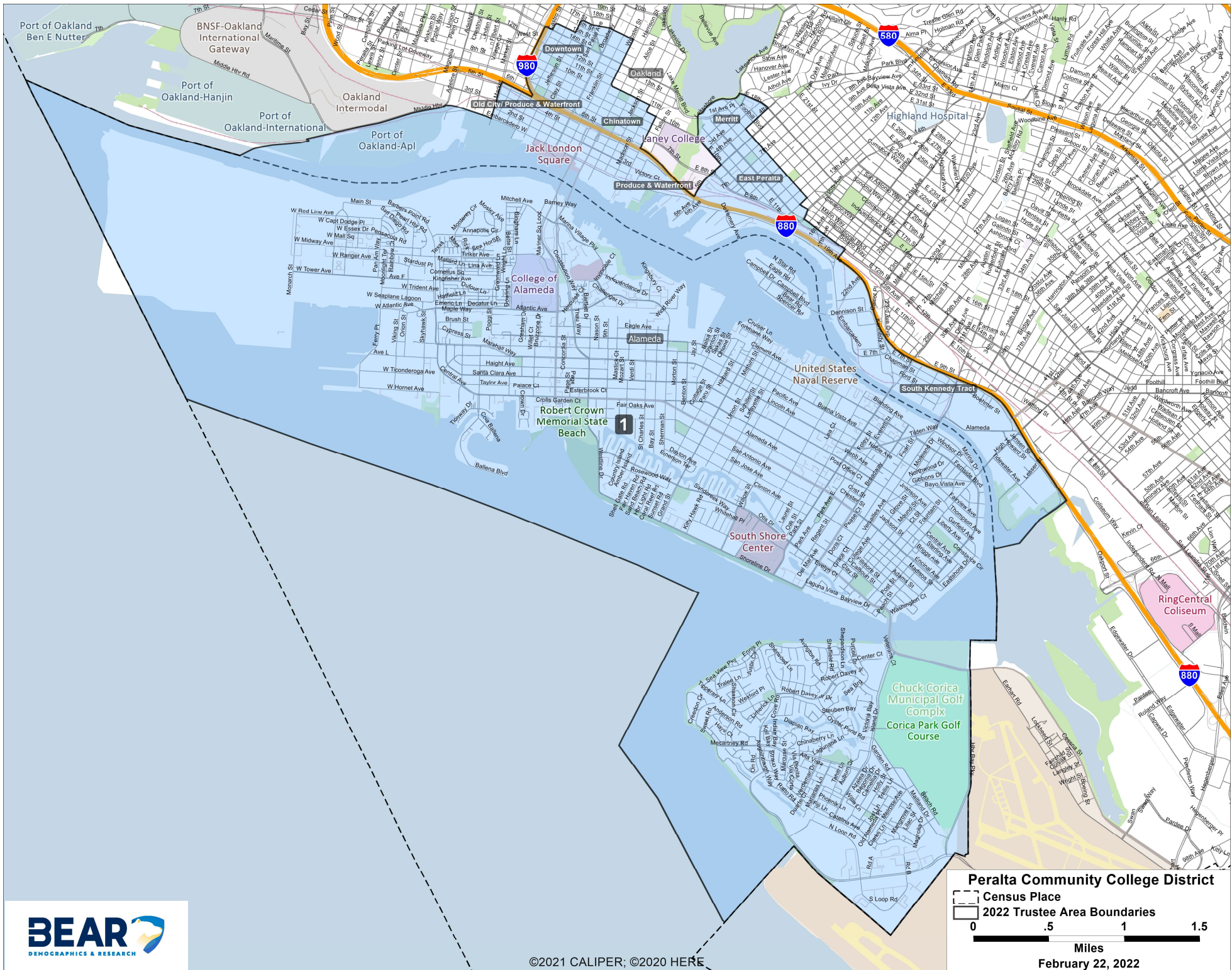
Peralta Community College District

- Census Place
- 2022 Trustee Area Boundaries

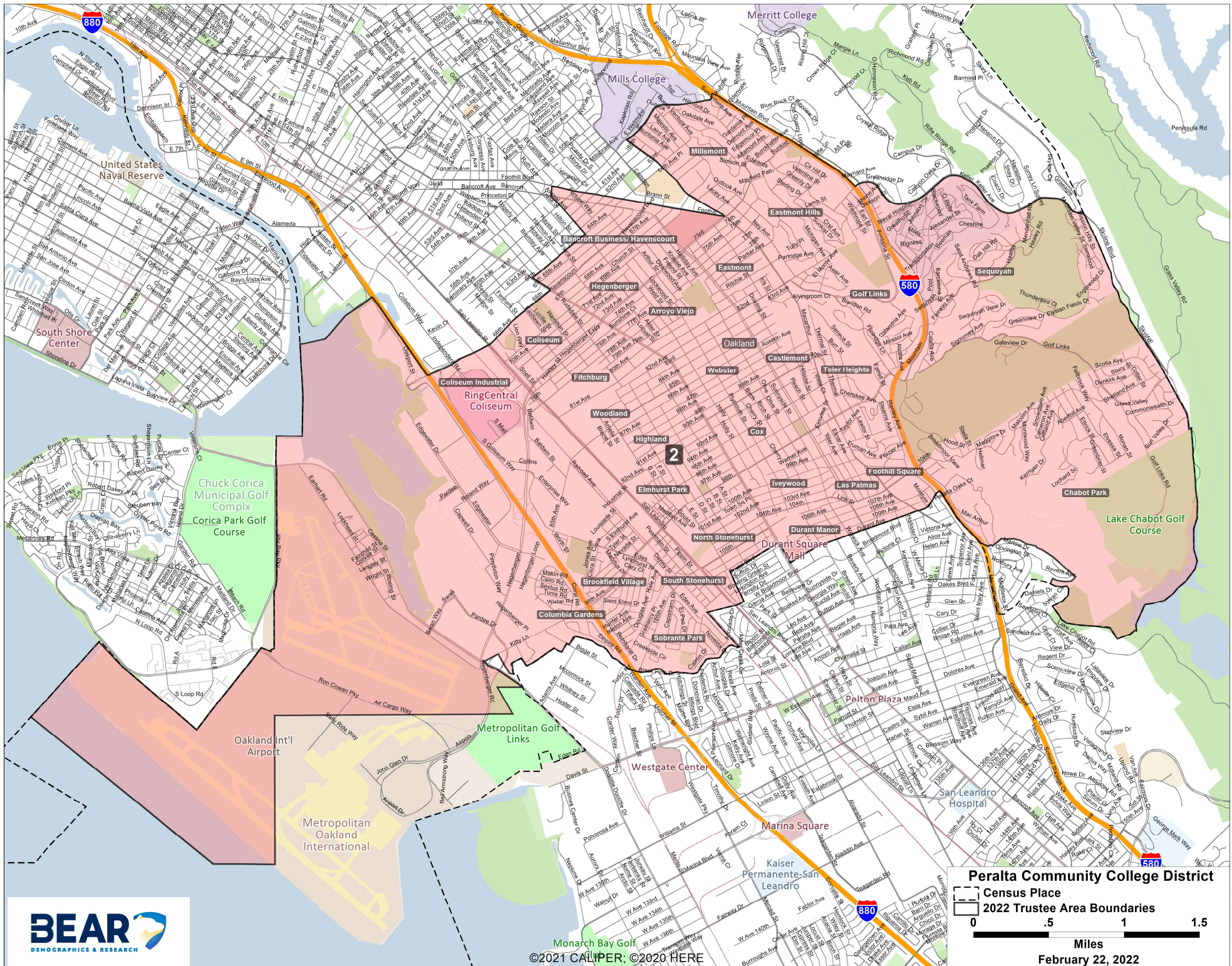
0 1 2 3

Miles

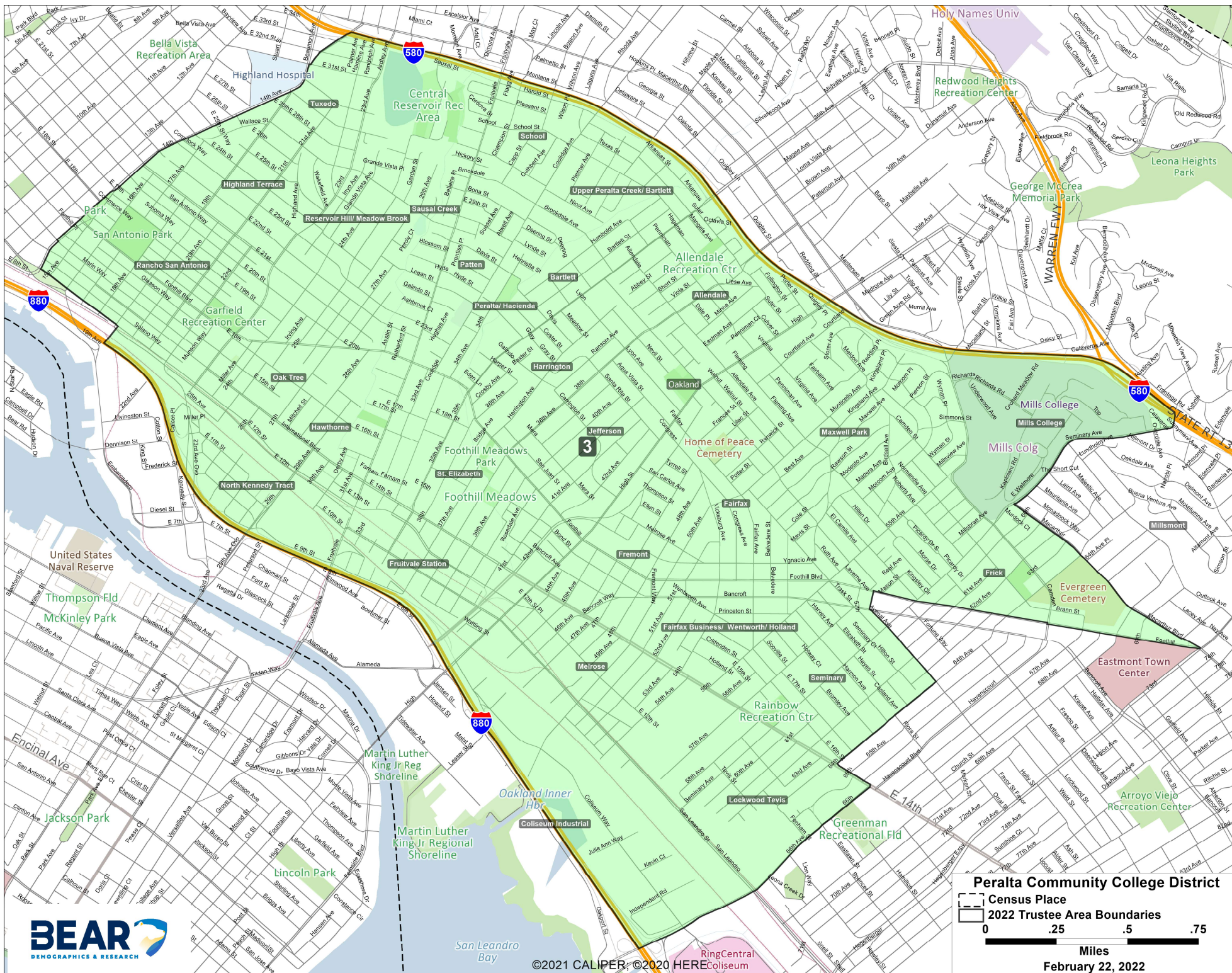
February 22, 2022



©2021 CALIPER; ©2020 HERE



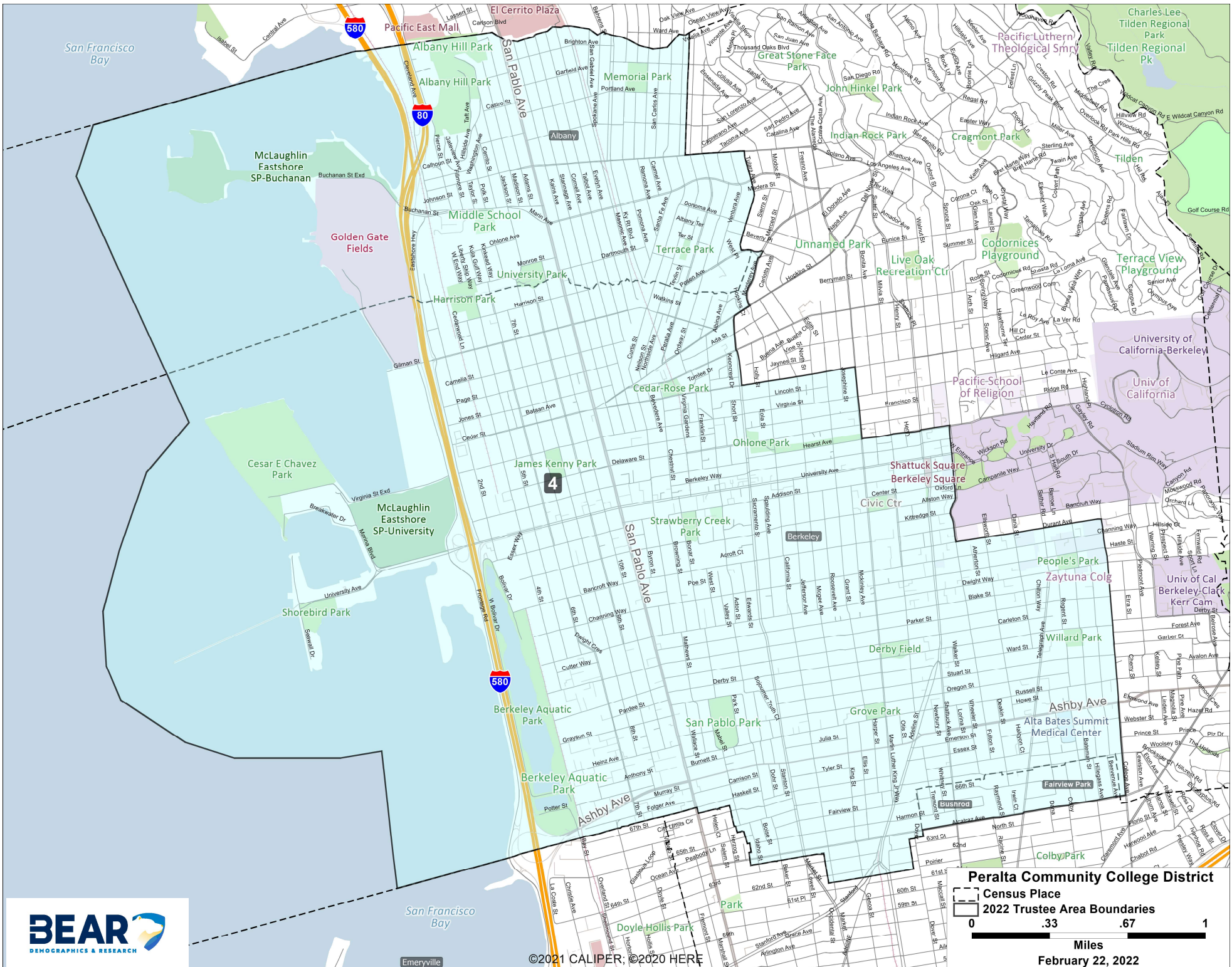
Monarch Bay Golf
 ©2021 CALIPER, ©2020 HERE



©2021 CALIPER; ©2020 HERE Coliseum

Peralta Community College District
 - - - - - Census Place
 [] 2022 Trustee Area Boundaries

0 .25 .5 .75
 Miles
 February 22, 2022

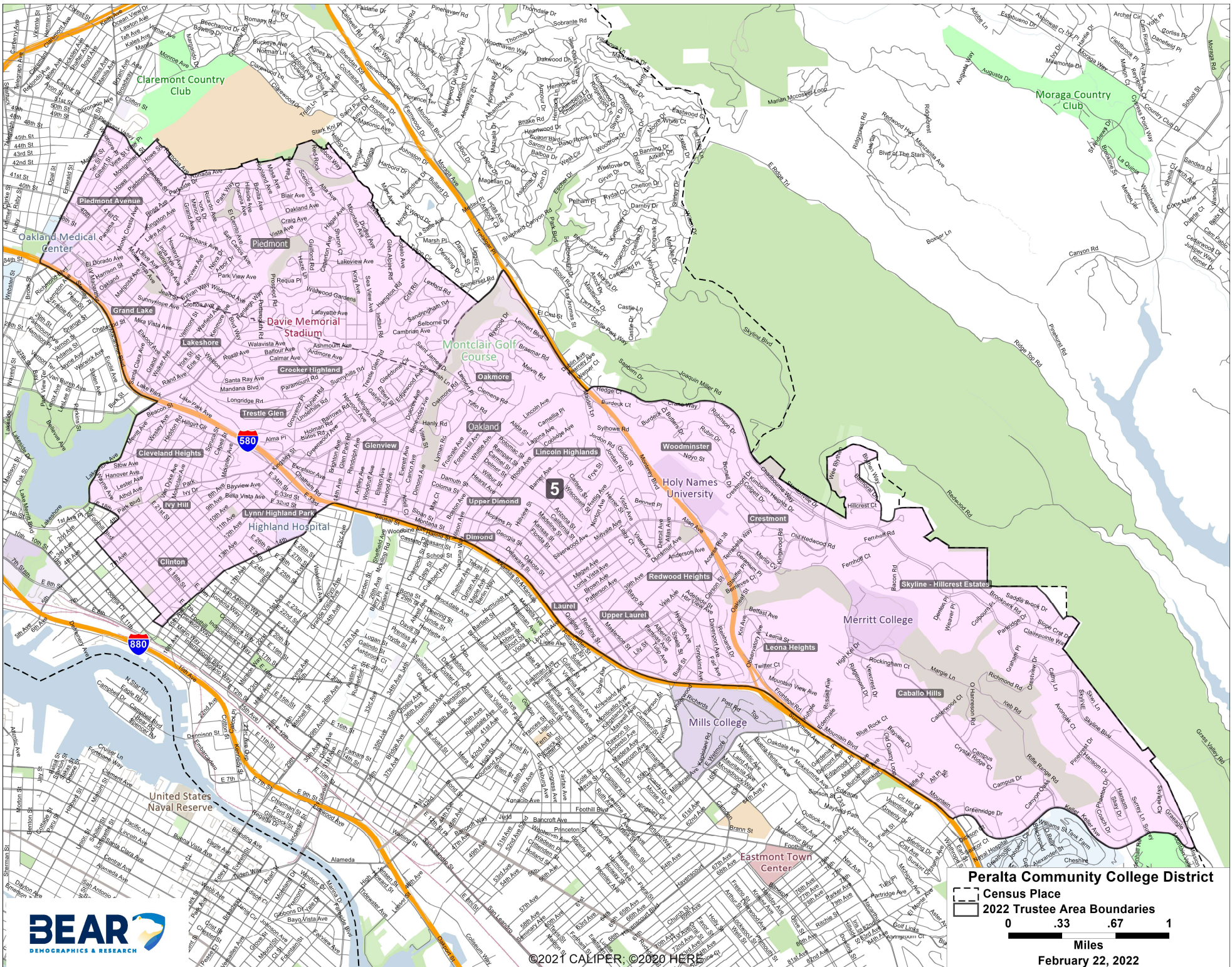


Peralta Community College District
 - - - - - Census Place
 [] 2022 Trustee Area Boundaries

0 .33 .67 1
 Miles
 February 22, 2022



©2021 CALIPER; ©2020 HERE



Peralta Community College District

Census Place
 2022 Trustee Area Boundaries

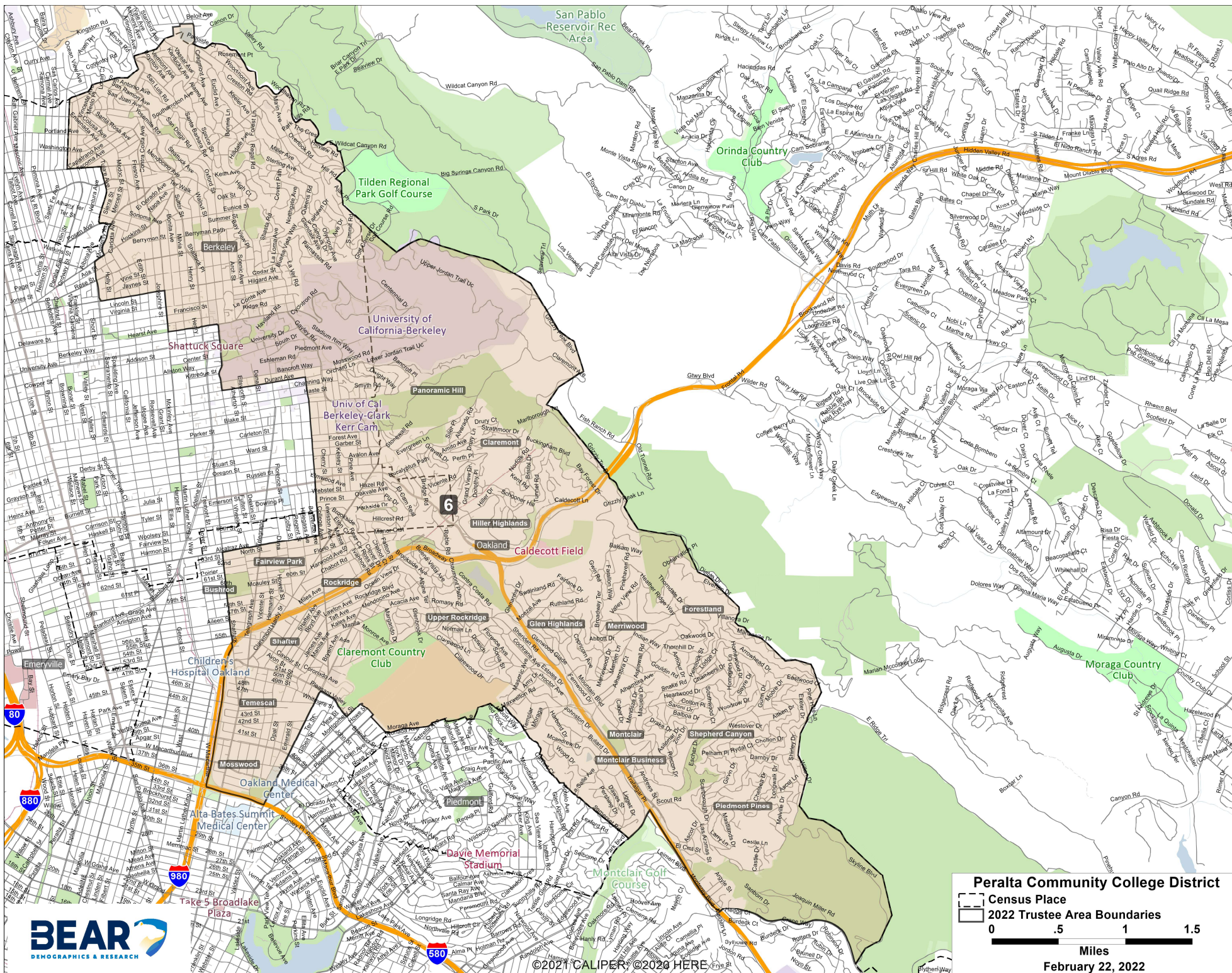
0 .33 .67 1

Miles

February 22, 2022



©2021 CALIPER, ©2020 HERA



©2021 CALIPER; ©2020 HERE

Peralta Community College District

- Census Place
- 2022 Trustee Area Boundaries

0 .5 1 1.5
Miles

February 22, 2022



©2021 CALIPER, ©2020 HERE

Peralta Community College District
 Census Place
 2022 Trustee Area Boundaries

0 .33 .67 1
 Miles
 February 22, 2022

**Peralta Community College District
2022 Trustee Areas Demographic Profile**

Board of Trustees Areas	1	2	3	4	5	6	7	Total	
Total Population (Pop)	98,960	98,476	97,531	100,008	98,734	96,099	98,319	688,127	
Deviation	656	172	(773)	1,704	430	(2,205)	15		
% Deviation	0.7%	0.2%	-0.8%	1.7%	0.4%	-2.2%	0.0%	4.0%	
Latino	12.8%	49.6%	45.0%	15.5%	13.2%	9.5%	15.3%	23.0%	
White	37.8%	7.8%	11.7%	44.1%	44.1%	60.4%	33.3%	34.1%	
Black	8.3%	32.6%	20.2%	10.3%	14.5%	6.3%	26.5%	17.0%	
American Indian	0.8%	0.5%	0.6%	0.7%	0.7%	0.6%	0.8%	0.7%	
Asian	36.8%	5.9%	19.6%	25.9%	24.0%	19.9%	19.9%	21.7%	
Hawaiian, Pacific Islander	0.7%	1.1%	0.6%	0.3%	0.4%	0.3%	0.8%	0.6%	
Other Race	1.5%	0.8%	0.8%	1.9%	1.7%	2.0%	1.6%	1.5%	
Multi Minority Race	1.4%	1.7%	1.5%	1.4%	1.5%	10.5%	1.8%	1.5%	
Voting Age Population (VAP)	81,161	73,166	74,623	85,290	81,781	82,208	86,076	564,305	
Latino	11.6%	45.6%	41.6%	14.9%	11.9%	8.9%	14.5%	20.6%	
White	39.7%	9.0%	13.0%	45.2%	45.9%	62.0%	35.0%	36.4%	
Black	8.4%	35.3%	21.3%	10.1%	14.6%	6.1%	25.3%	17.0%	
American Indian	0.9%	0.5%	0.6%	0.7%	0.7%	0.6%	0.8%	0.7%	
Asian	0.9%	0.5%	0.6%	0.7%	0.7%	0.6%	0.8%	22.2%	
Hawaiian, Pacific Islander	0.6%	1.1%	0.6%	0.2%	0.4%	0.2%	0.7%	0.5%	
Other Race	1.4%	0.8%	0.8%	1.8%	1.6%	1.9%	1.6%	1.4%	
Multi Minority Race	1.1%	1.5%	1.3%	1.1%	1.3%	0.8%	1.5%	1.2%	
Citizen Voting Age Population (CVAP) 2019	68,806	54,053	53,692	70,200	74,242	71,218	69,339	461,550	
Latino	10.7%	26.0%	27.6%	11.4%	9.3%	7.2%	10.5%	13.8%	
White	44.5%	11.4%	16.8%	53.0%	51.6%	69.5%	40.1%	43.0%	
Black	9.0%	53.0%	29.9%	11.2%	15.7%	5.3%	30.0%	20.6%	
Asian	34.0%	6.5%	23.4%	21.8%	21.2%	16.3%	16.8%	20.3%	
All Other	1.8%	3.1%	2.4%	2.6%	2.2%	1.6%	2.7%	2.3%	

2020 Census State Adjusted Redistricting Data

2019 ACS CVAP Tabulation

Peralta Community College District 2022 Trustee Areas Demographic Profile

Board of Trustees Areas	1	2	3	4	5	6	7	Total
Total Population (By Age and Gender)	95,446	97,434	95,775	97,846	97,090	93,523	89,967	667,081
Male	48.9%	48.2%	48.2%	49.4%	48.2%	48.8%	48.6%	48.6%
Female	51.2%	51.8%	51.8%	50.6%	51.8%	51.2%	51.4%	51.4%
Under 5 years	5.3%	8.6%	7.0%	4.4%	5.1%	4.6%	4.4%	5.7%
Male	2.4%	4.0%	3.5%	2.5%	2.6%	2.2%	2.0%	2.8%
Female	2.9%	4.6%	3.6%	1.9%	2.4%	2.4%	2.4%	2.9%
5 to 17 years	13.0%	18.6%	17.3%	11.3%	11.5%	10.4%	8.4%	13.0%
Male	6.7%	9.4%	8.6%	6.2%	5.9%	5.6%	4.4%	6.7%
Female	6.3%	9.2%	8.7%	5.1%	5.6%	4.8%	4.0%	6.3%
18 to 65 years	65.2%	62.8%	65.4%	72.9%	66.3%	66.8%	74.5%	67.6%
Male	32.5%	30.6%	31.6%	35.8%	32.0%	32.9%	37.1%	33.2%
Female	32.7%	32.2%	33.8%	37.1%	34.4%	34.0%	37.4%	34.5%
65 years and over	16.5%	10.0%	10.3%	11.4%	17.1%	18.2%	12.7%	13.7%
Male	7.3%	4.2%	4.7%	5.0%	7.7%	8.1%	5.1%	6.0%
Female	9.2%	5.9%	5.7%	6.5%	9.4%	10.1%	7.6%	7.7%
Total Households (By Household Income)	38,674	30,008	29,203	37,055	41,919	36,750	42,006	255,615
Less than \$10,000	4.5%	6.8%	8.2%	7.8%	3.4%	3.9%	7.1%	5.8%
\$10,000 to \$14,999	4.7%	7.2%	7.2%	4.4%	3.4%	2.3%	7.7%	5.2%
\$15,000 to \$24,999	6.9%	9.8%	10.0%	7.8%	5.1%	4.0%	8.5%	7.2%
\$25,000 to \$34,999	5.1%	9.4%	9.7%	6.4%	5.7%	4.8%	7.4%	6.8%
\$35,000 to \$49,999	7.7%	11.9%	13.6%	9.2%	7.0%	6.1%	7.9%	8.8%
\$50,000 to \$74,999	12.7%	17.6%	16.2%	12.9%	12.6%	8.6%	12.6%	13.1%
\$75,000 to \$99,999	10.8%	12.4%	12.0%	9.9%	11.7%	9.5%	11.1%	11.0%
\$100,000 to \$149,999	17.5%	14.2%	11.9%	15.3%	16.6%	14.9%	16.6%	15.5%
\$150,000 to \$199,999	12.2%	5.4%	6.4%	10.8%	11.8%	12.4%	8.8%	9.9%
\$200,000 or more	17.9%	5.3%	4.9%	15.5%	22.6%	33.6%	12.4%	16.7%
Population 25 years and over (By Education Level)	71,990	61,763	63,024	62,350	75,999	65,830	72,515	473,470
Less than 9th grade	6.2%	14.1%	18.9%	2.4%	4.5%	1.3%	5.0%	7.3%
9th to 12th grade, no diploma	5.6%	13.3%	12.0%	2.5%	3.4%	1.4%	4.9%	6.0%
High school graduate (includes equivalency)	12.2%	25.4%	20.9%	8.0%	9.8%	4.7%	13.2%	13.2%
Some college, no degree	17.4%	21.2%	19.4%	13.4%	13.7%	8.9%	16.9%	15.8%
Associate degree	6.2%	5.8%	5.9%	5.1%	5.8%	3.6%	6.5%	5.6%
Bachelor's degree	32.8%	13.0%	14.8%	33.9%	33.4%	36.0%	32.6%	28.5%
Graduate or professional degree	19.6%	7.3%	8.2%	34.6%	29.4%	44.2%	21.0%	23.7%
Total Housing Units (By Occupancy Status)	41,557	31,861	31,370	39,749	44,425	38,688	45,166	272,816
Occupied	93.1%	94.2%	93.1%	93.2%	94.4%	95.0%	93.0%	93.7%
Owner occupied	40.6%	43.6%	33.6%	34.0%	47.8%	59.1%	22.4%	40.0%
Renter occupied	52.5%	50.6%	59.5%	59.2%	46.5%	35.9%	70.6%	53.7%
Vacant	6.9%	5.8%	6.9%	6.8%	5.6%	5.0%	7.0%	6.3%

2019 ACS Reformatted Tables -Block Group Tabulation

**Peralta Community College District
2022 Trustee Areas Demographic Profile**

Board of Trustees Areas	1	2	3	4	5	6	7	Total	
Population 5 years and over (By Language Spoken at Home and English Ability)	90,271	89,146	89,047	93,519	92,090	89,198	85,976	629,247	
English only	61.3%	52.2%	42.4%	68.3%	71.2%	75.1%	70.2%	63.0%	
Language other than English	38.7%	47.8%	57.6%	31.7%	28.8%	24.9%	29.9%	37.0%	
Speaks English less than "very well"	17.1%	21.4%	30.9%	8.2%	11.6%	5.0%	12.6%	15.2%	
Spanish	8.0%	40.0%	36.0%	9.0%	8.2%	6.0%	9.2%	16.5%	
Speaks English less than "very well"	2.5%	17.6%	18.0%	2.1%	2.3%	0.9%	3.1%	6.6%	
Other Indo-European languages	5.2%	1.3%	1.1%	7.2%	4.2%	8.6%	4.8%	4.7%	
Speaks English less than "very well"	1.2%	0.4%	0.3%	1.2%	0.7%	1.0%	1.0%	0.8%	
Asian and Pacific Island languages	23.7%	4.3%	16.9%	14.5%	14.2%	9.0%	11.2%	13.4%	
Speaks English less than "very well"	12.6%	2.4%	10.6%	4.7%	7.5%	2.5%	6.2%	6.7%	
Population With Poverty Status Determined (by Poverty Status and Age)	93,943	96,805	93,860	91,880	96,238	68,756	89,125	648,608	
Income Below Poverty Level Past 12 Months	10.2%	20.1%	23.9%	18.7%	7.7%	9.8%	18.1%	15.5%	
Under 18 years	2.0%	8.0%	8.3%	1.4%	0.9%	0.4%	3.9%	3.6%	
Over 65	2.4%	1.6%	1.7%	1.3%	1.4%	0.9%	3.4%	1.8%	
Income At or Above Poverty Level Past 12 Months	89.8%	79.9%	76.1%	81.3%	92.3%	90.2%	82.0%	84.5%	
Under 18 years	16.7%	18.5%	16.2%	14.8%	15.7%	15.5%	8.6%	15.2%	
Over 65	13.6%	8.6%	8.3%	10.7%	15.9%	18.7%	9.1%	12.1%	
Total Under 18 years	18.7%	26.5%	24.5%	16.2%	16.6%	15.9%	12.5%	18.8%	
Total Over 65	16.0%	10.2%	9.9%	11.9%	17.3%	19.6%	12.5%	13.9%	

2019 ACS Reformatted Tables -Tract Tabulation