

BCC West – Downtown Berkeley Association

PCCD Community Briefing



March 24, 2022 | 9:00am



Meet The Team



Shonda Scott

CEO, Founder
360 Total Concept

- 1. Introduction**
- 2. Opening Remarks**
- 3. Welcome**
- 4. Bond Program Overview**
- 5. Intro to BCC Campus**
- 6. Berkeley City College – West Overview and Update**
- 7. Open Forum Q&A**
- 8. Close**

AGENDA



Meet The Chancellor



Dr. Jannett Jackson

Interim Chancellor,
Peralta Community College District



**Welcome
From
PCCD**



Atheria Smith

Interim Vice Chancellor of General Services
Peralta Community College District



Meet The Team



Sharon Serrano

Deputy Program Manager
AECOM



Program Overview

Sharon Serrano , AECOM

\$77 Million
State Funding in Place

\$129 Million
Contract
Commitments

15
*Major Projects
Underway*

\$115 Million
Bonds Issued

\$62.2 Million
Expended

56
*Infrastructure
Packages
Underway*

Laney College



Berkeley City College



Merritt College



College of Alameda



Message From Berkeley City College



Sean Brooks

Vice President of Administrative Services
Berkeley City College
Peralta Community College District

Bob Parks

Project Director

Jeremy Bordi

Senior Project Manager



**Meet The
Kitchell
Team**



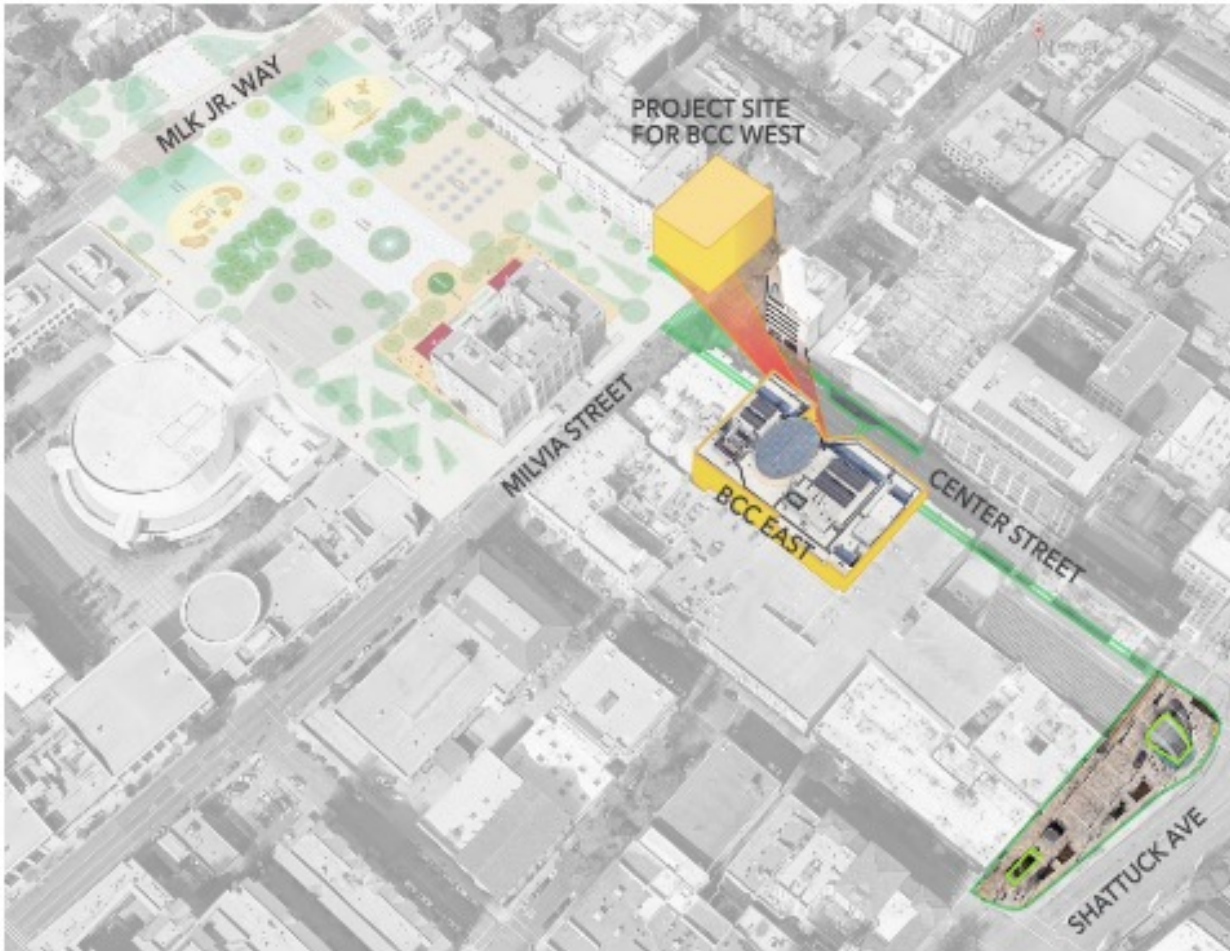
Agenda



- Project Overview & Schedule Overview
- Bond Spending Plan
- Business Outreach
- Stacking Diagram
- Floor Plans
- Exterior Perspectives
- Interior Perspectives
- Planned Construction Site Logistics
- Questions



Milvia Street - Project Overview



- Berkeley City College is expanding its single-building campus with a new academic facility in the heart of downtown Berkeley. The project site is located at 2118 Milvia Street, at the southeast corner of Milvia and Center Streets.
- The project scope includes demolition of an existing 3-story building and its replacement with a new six story building.

Milvia Street - Schedule Overview

Activity	Target Dates TBD
Programming Phase	May 2021 - September 2021
Schematic Design Phase	September - November 2021
Design Development Phase	November 2021 - January 2022
Construction Document Phase	January 2022 - May 2022
Division of the State Architect (DSA) Review	May 2022 - February 2023
Construction Phase	January 2023 - September 2024
Move-in and Closeout	October 2024 - December 2024

Bond Spending Plan



Bond Spending Plan

Schedule Key	
■	Contractor or Design Build Entity Procurement
■	Design
■	DSA Review
■	Construction

	Proj#	Type ¹	3/31/21 Total Project Cost Estimate ²	Anticipated Funding			2021				2022				2023				2024				2025				2026			
				Measure G	State Match ³	Measure A (May 2020 Issuance) ⁴	Q1	Q2	Q3	Q4	Q1	Q2	Q3	Q4	Q1	Q2	Q3	Q4	Q1	Q2	Q3	Q4	Q1	Q2	Q3	Q4	Q1	Q2	Q3	Q4
Berkeley City College																														
2118 Milvia Street (New Building) - DB	2477	New	\$83,851,707	\$75,057,807	\$0	\$8,793,900																								
2050 Center Reconfiguration - DB	2496	Mod	\$31,550,808	\$31,550,808	\$0	\$0																								
Infrastructure	2497	Mod	\$3,000,000	\$3,000,000	\$0	\$0																								
Berkeley ADA Modernization	2323	Mod	\$748,941	\$0	\$0	\$748,941																								
Information Technology	2412	IT	\$2,850,000	\$2,850,000	\$0	\$0																								
Berkeley College Subtotal			\$122,001,456	\$112,458,615	\$0	\$9,542,841																								

¹ Type of Project: New Construction (New); Modernization (Mod); Information Technology (IT); Program-wide (Prog)

² Total Project Cost Estimate: Total Capital Costs, including Hard Costs for Construction Building/Interiors and Soft Costs for Development Fees/Consultants. Typical Ratio is 70% Hard to 30% Soft Costs.

³ FPP - Final Project Proposal: Design Funded in 19/20 and Construction Funded in FY 21/22 - FY 22/23; IPP - Initial Project Proposal: Future Funding Proposal for FY 23/24

⁴ Allocation per Peralta Finance Budget sent to PMO on 10/15/20, with project adjustments to reflect actuals while holding each overall College Measure A Allocation.



Business Outreach

- 25% Small Local Business Participation
- Certification (small business located in 6 cities in Peralta District: Alameda, Albany, Berkeley, Emeryville, Oakland and Piedmont)
 - SLBE: Revenue size has not exceeded gross annual revenue for the past 3 consecutive years
 - Construction Firms: \$8.5M > under
 - Goods Non-Professional Services Firms \$6M > under
 - A/E and Professional Services \$3M > under
 - SELBE
 - For businesses that have not exceeded revenue of \$1.5M past 3 consecutive years

Milvia Street – Design Highlights

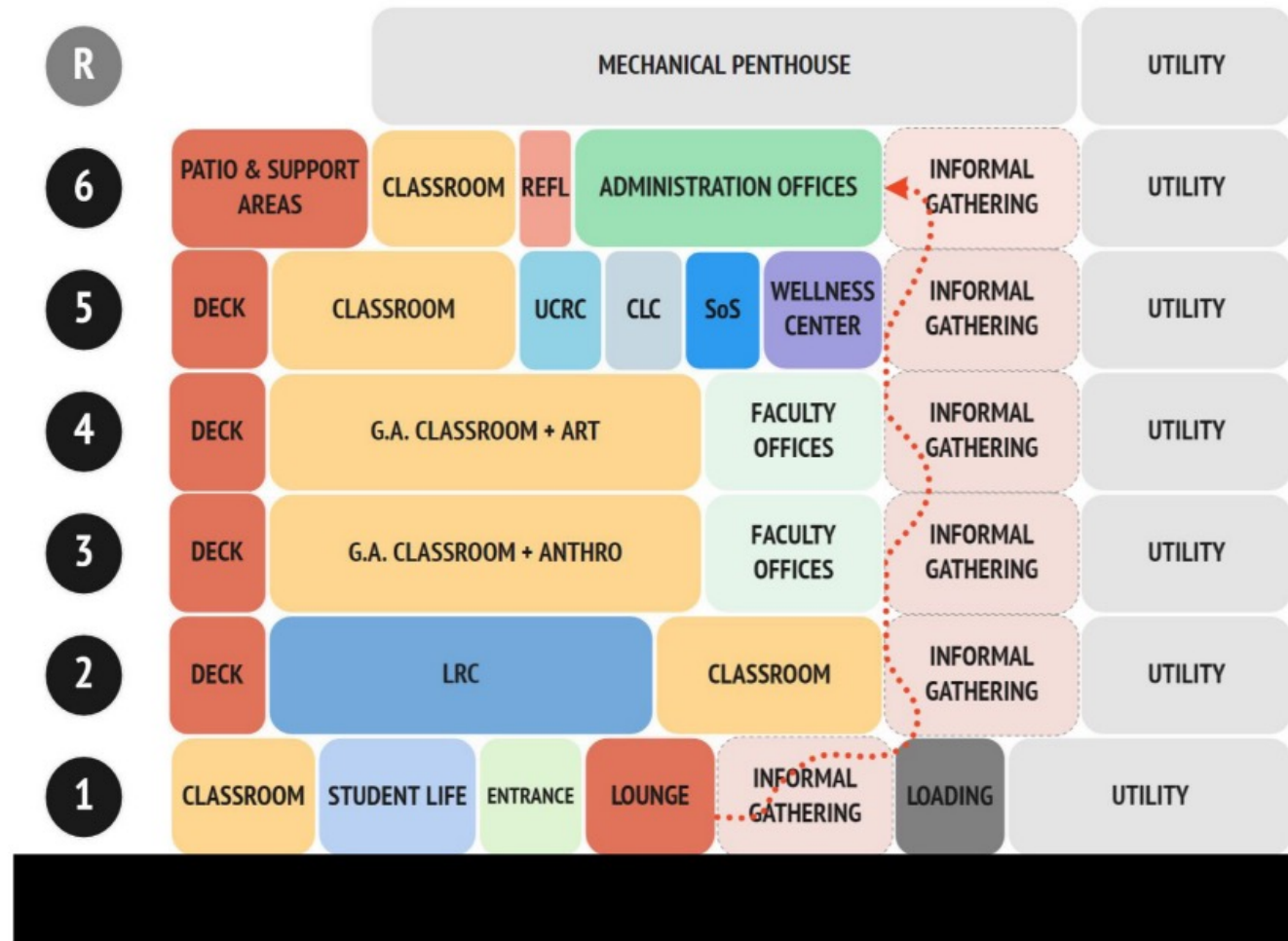
With this project, the College will expand its footprint, increase its visibility and be able to reach more students through expanded curriculum and additional programming.

The scope of the new building includes:

- A generous entry lobby with expanded welcome desk and adjacent security office and bike storage.
- A student lounge on the ground floor with views towards Center Street, providing a welcoming and flexible place for students to socialize, study and collaborate.
- Space for Student Life on the ground floor
- New classroom space on every floor, both general assignment and specialty classrooms for Art, Anthropology and Communications (including a Communications Lab)
- Learning Resource Center
- Faculty offices co-located with classrooms for more accessibility and visibility to students
- Space for the College's Learning Communities to come together
- A Wellness Center
- Offices for College administration and staff
- Conferencing and collaboration areas dispersed throughout the building
- Social areas within the corridor, including seating areas along the corridor walls and collaboration pods at the ends
- Outdoor decks at the South end of the main circulation corridors on floors 2-5
- An outdoor patio space on the 6th floor, with an adjacent large conference room. Both may be used for classes and events.



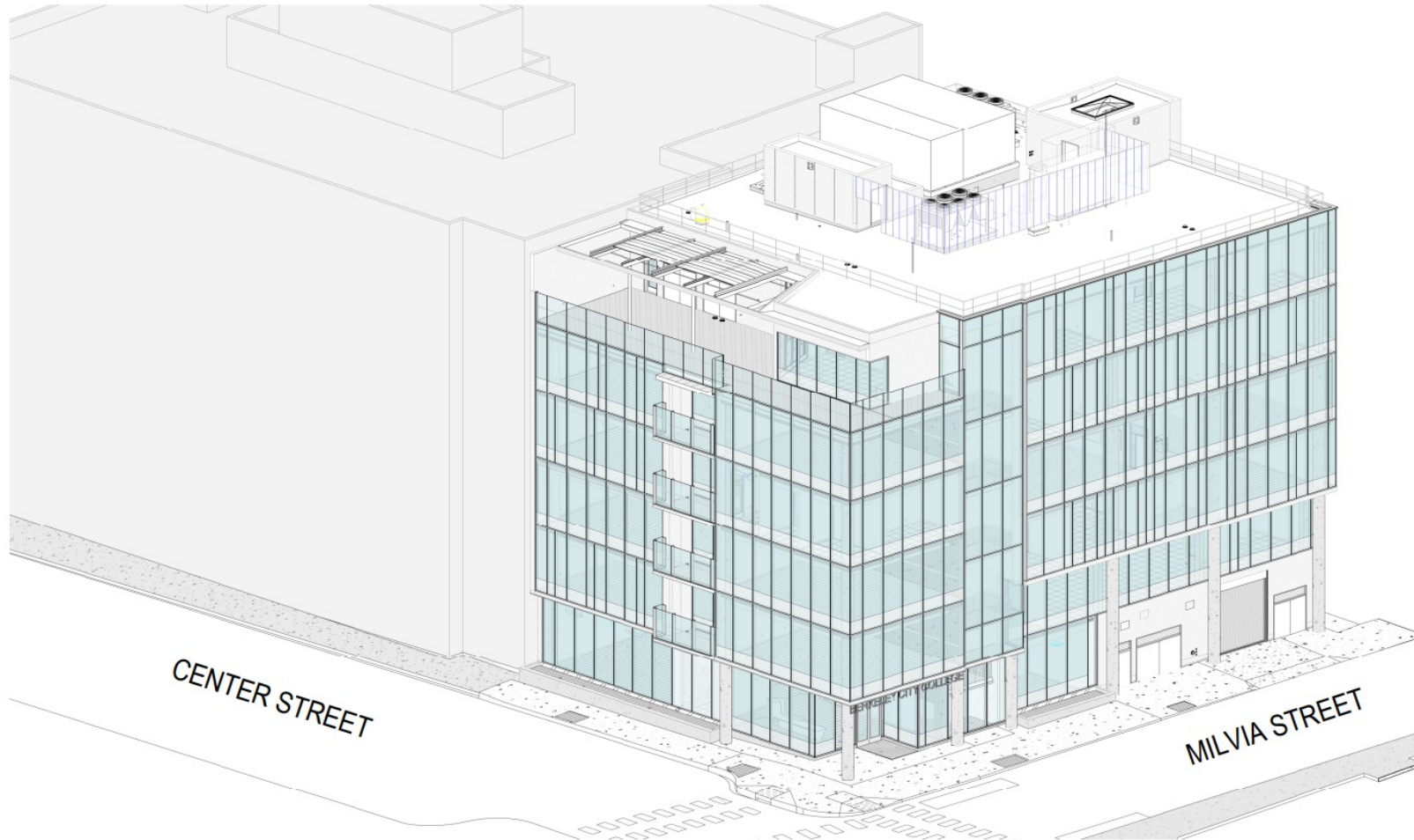
Milvia Street - Stacking Diagram



Stacking Diagram

Milvia Street – Exterior Perspectives

SOUTHEAST AXONOMETRIC



Milvia Street – Exterior Perspectives



LOOKING DOWN MILVIA STREET AT THE NORTH BUILDING ELEVATION

Milvia Street – Exterior Perspectives



Milvia Street – Exterior Perspectives



Milvia Street – Interior Perspectives



Milvia Street – Interior Perspectives



Milvia Street – Interior Perspectives



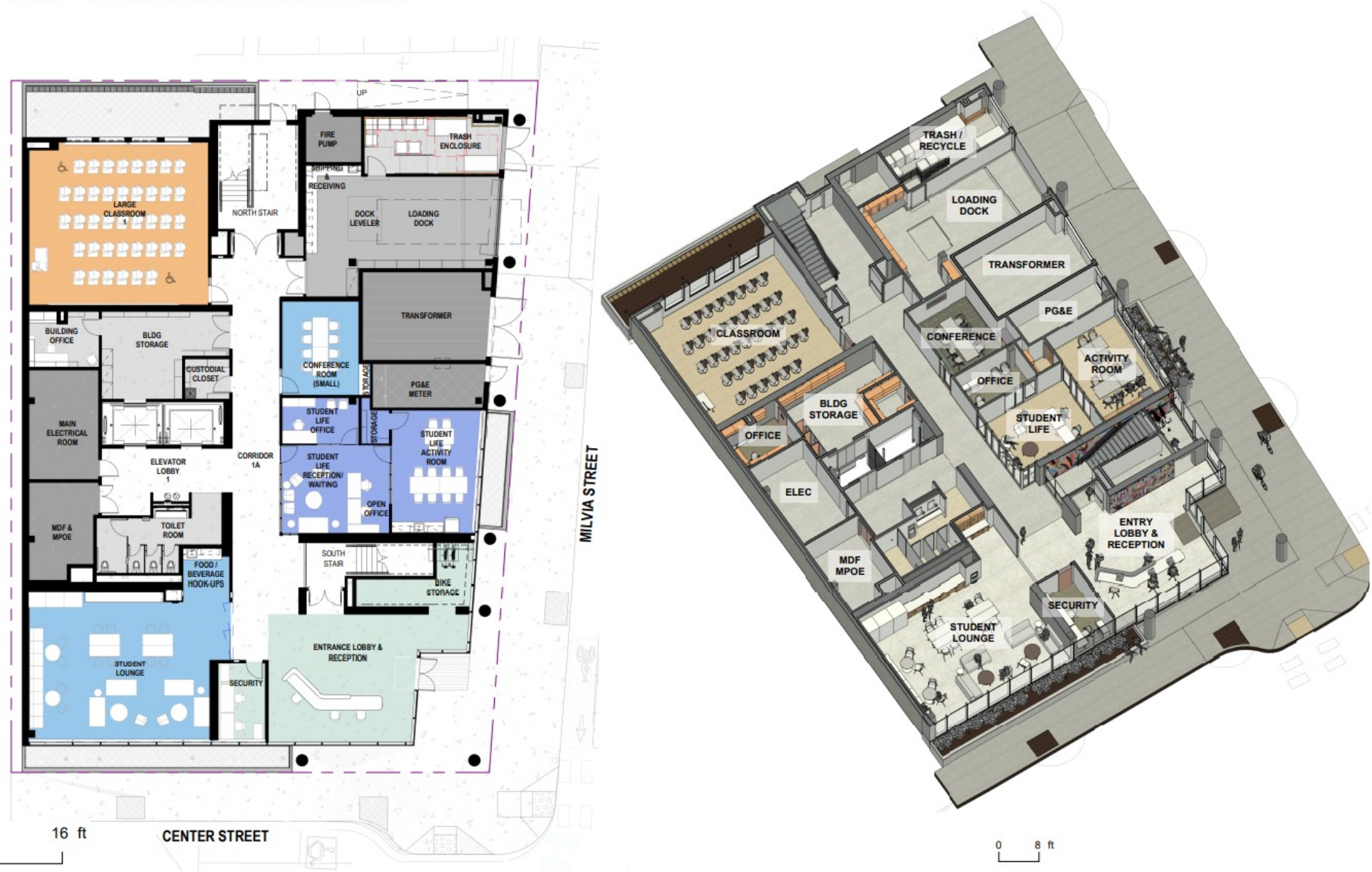
Milvia Street – Interior Perspectives



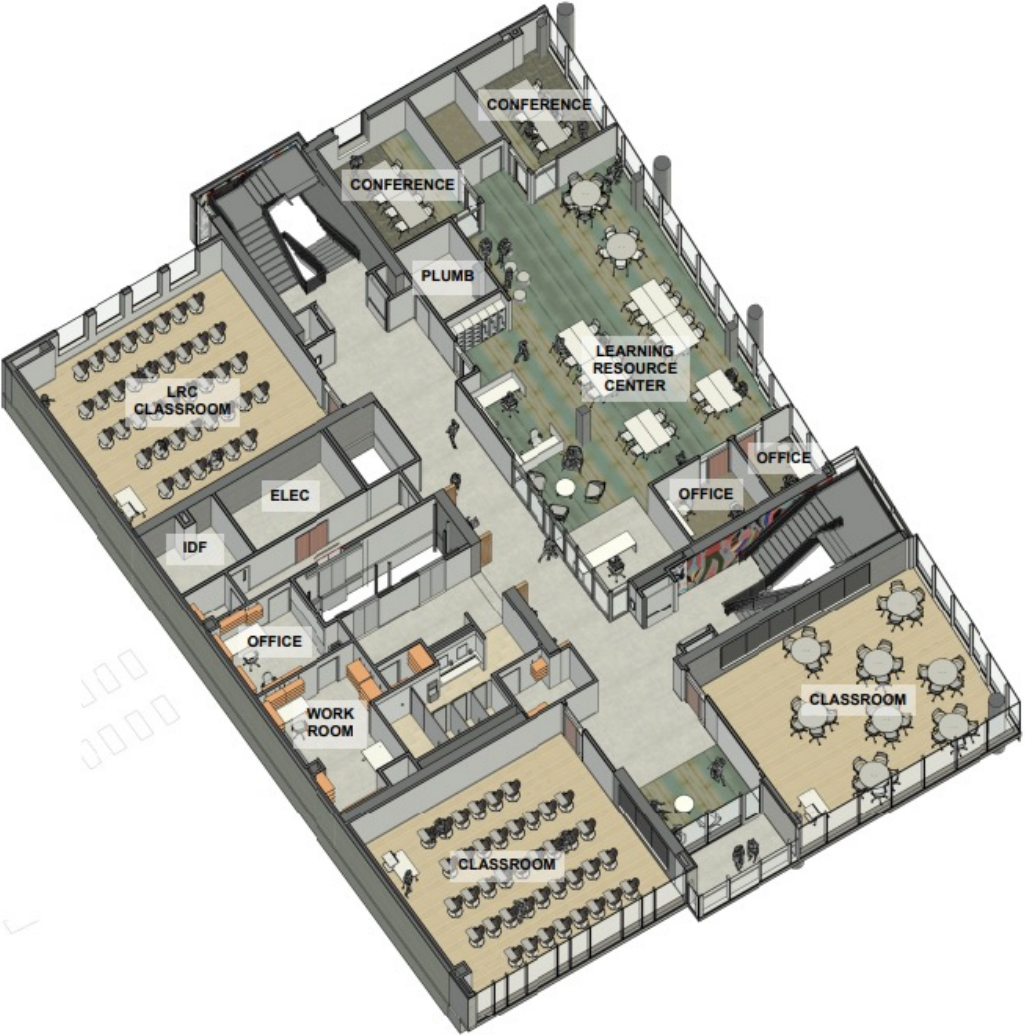
Milvia Street – Interior Perspectives



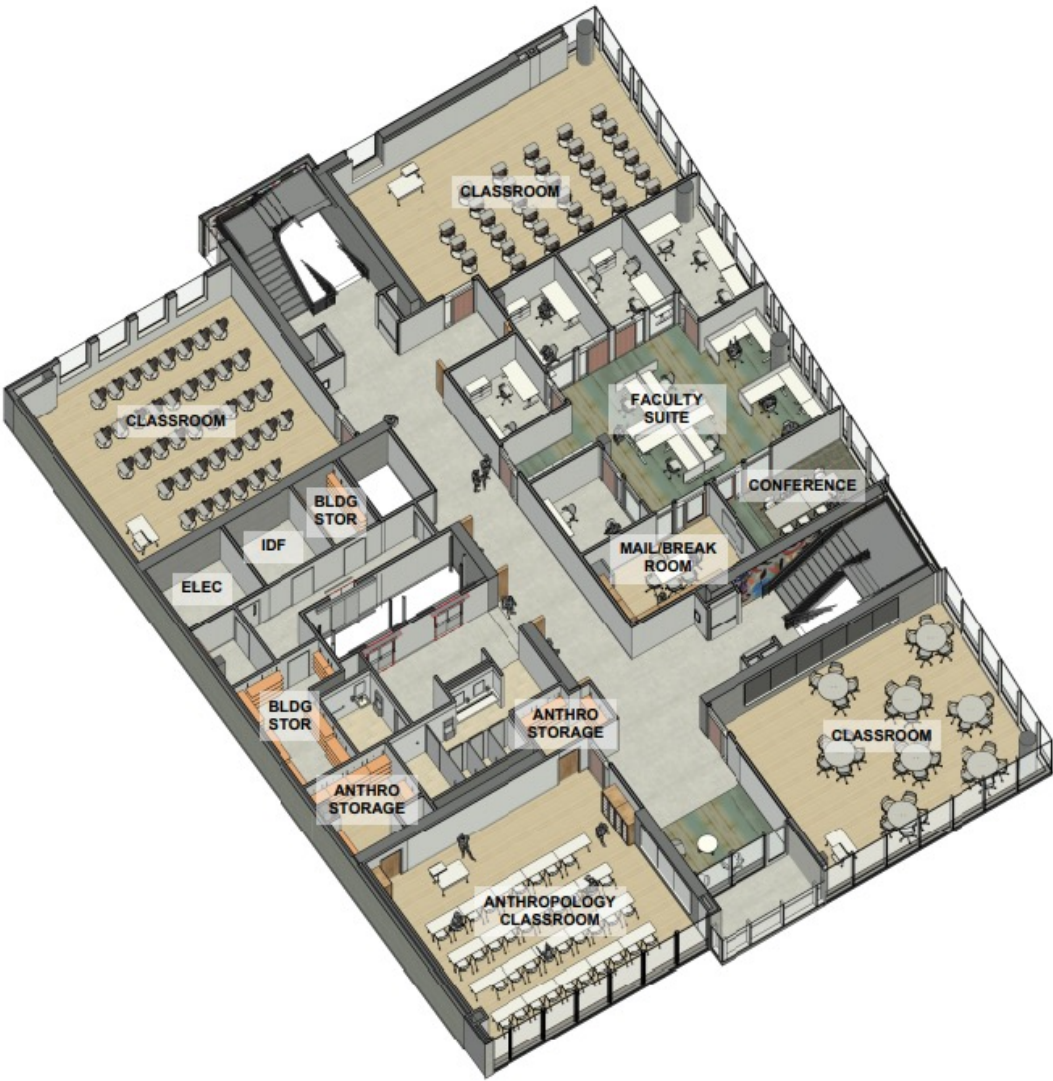
LEVEL 1 - FLOOR PLAN & AXONOMETRIC FLOOR PLAN



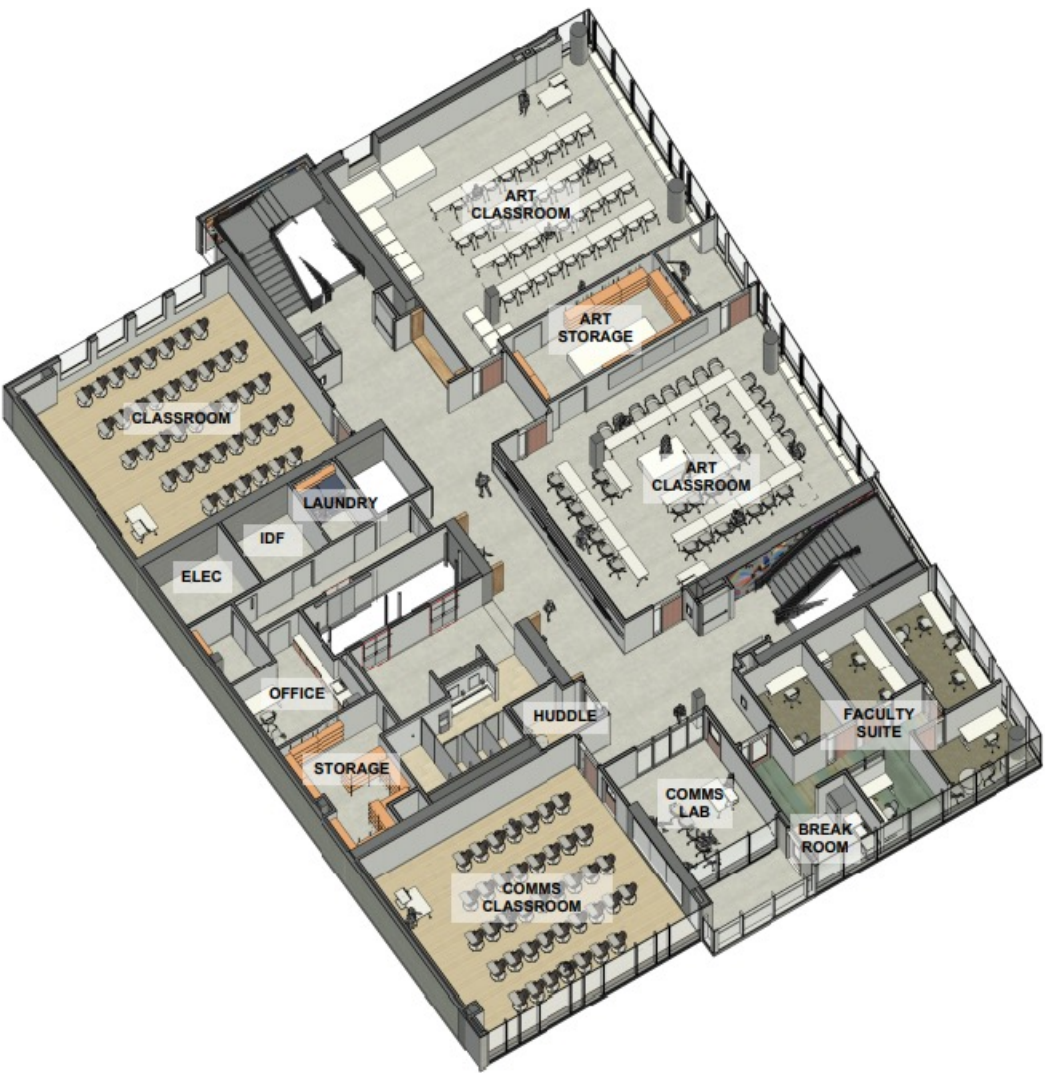
LEVEL 2 - FLOOR PLAN & AXONOMETRIC FLOOR PLAN



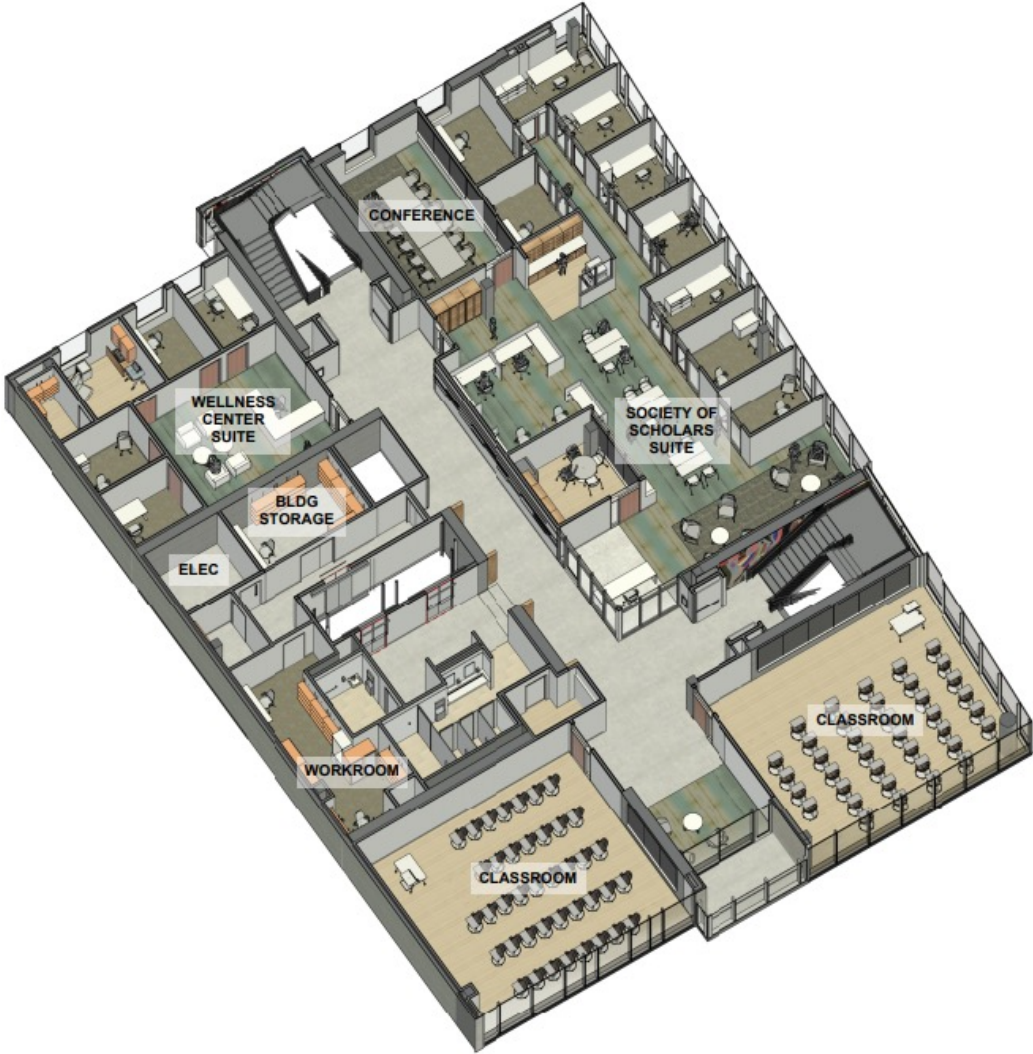
LEVEL 3 - FLOOR PLAN & AXONOMETRIC FLOOR PLAN



LEVEL 4 - FLOOR PLAN & AXONOMETRIC FLOOR PLAN



LEVEL 5 - FLOOR PLAN & AXONOMETRIC FLOOR PLAN



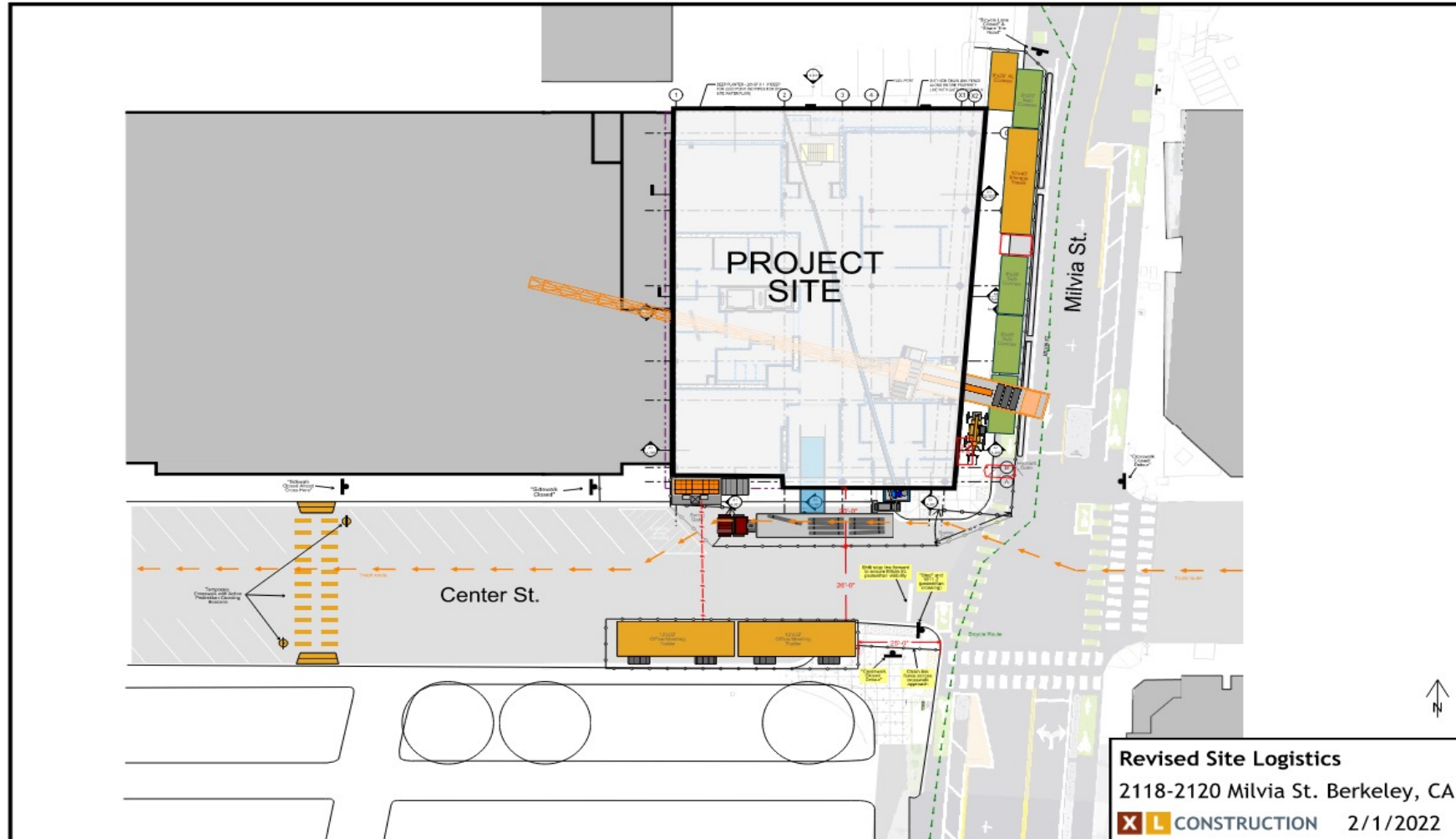
LEVEL 6 - FLOOR PLAN & AXONOMETRIC FLOOR PLAN



Site Logistics Plan



Site Logistics Plan



QUESTIONS?

Build Peralta Bond Program Contact Information

GET INVOLVED

25% SLBE Participation Goal

PERALTA COMMUNITY COLLEGE DISTRICT
ALAMEDA COUNTY
ALAMEDA
MERRITT COLLEGE

LEARN MORE
Build.Peralta.edu
link in bio

 **BuildPERALTA**

Website: build.peralta.edu
Email: buildperalta@peralta.edu
Phone: 510-587-7828
Follow @BuildPeralta

