


APPLY NOW

Complete our application at :
<https://peralta.edu/international/>


ADMISSION DEADLINES



SPRING
Jan - May
16 weeks


Overseas
Nov 15th

Transfer
Dec 15th



SUMMER
June - July
6-8 weeks

Transfer
May 15th

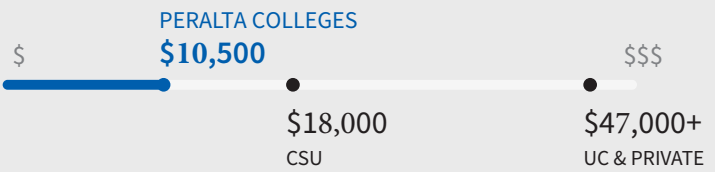


FALL
Aug - Dec
16 weeks

Overseas
June 15th

Transfer
July 15th

TUITION & ENROLLMENT FEES FOR ONE YEAR*



* Additional fees may apply, such as health insurance, books, etc.

WHY PERALTA COLLEGES ?

- Experienced International Advisors
- World Class Universities
- Employment Opportunities
- TOEFL Not Required
- Housing Referral
- Tech and Financial Hub
- Convenient Transportation
- Comfortable Weather
- Diverse Cultures



    @PeraltaIntl

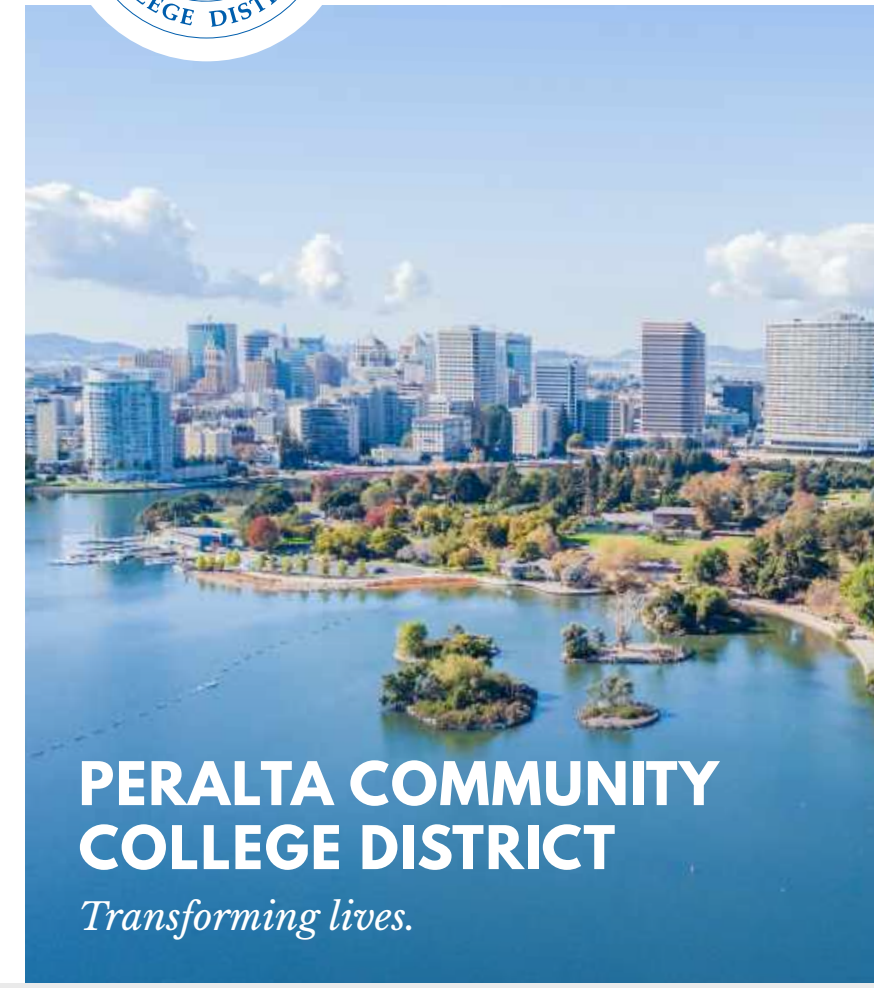
333 East 8th St.
Oakland CA, 94606
(510) 466-7380

2000 Center St., Suite 100
Berkeley CA, 94704
(510) 981-5020

peralta.edu/international | international@peralta.edu



Alameda | Berkeley | Oakland
California



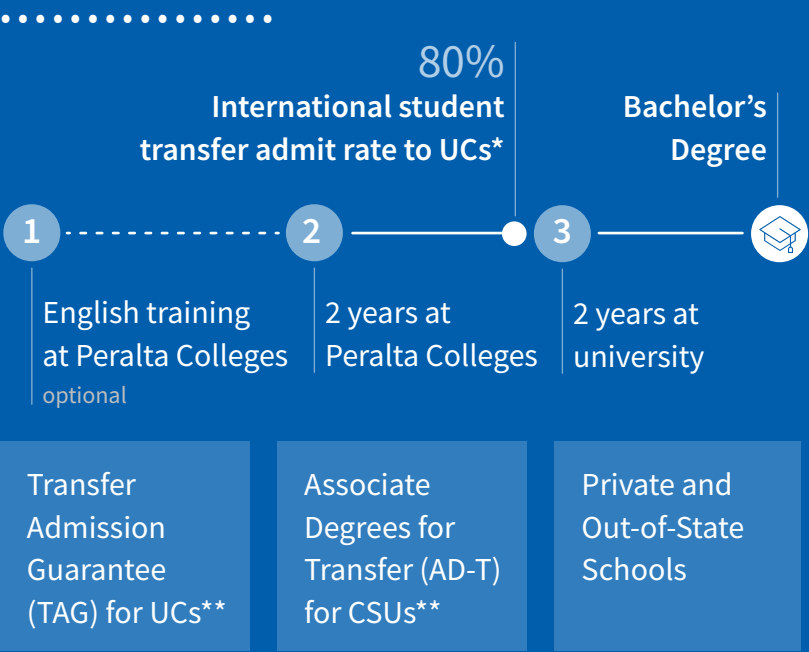
PERALTA COMMUNITY COLLEGE DISTRICT
Transforming lives.




OFFICE OF INTERNATIONAL EDUCATION



TRANSFER TO FOUR-YEAR UNIVERSITY



PARTNERSHIP WITH UC BERKELEY



Cross-Enrollment Program at UCB

UCB advisors on campus weekly



*universityofcalifornia.edu for 2018-19
**University of California (UC) and California State University (CSU)



Berkeley City College

berkeleycitycollege.edu

6,700 students

American Sign Language | Biology | **Biotechnology** | **Business** | Chemistry | **Computer Information Systems** | **Economics** | Education | English | *English for Speakers of Other Languages* | Global Studies | Liberal Arts | Mathematics | **Multimedia Arts** | Philosophy | Political Sciences



College of Alameda

alameda.peralta.edu

6,300 students

Accounting | **Apparel Design and Merchandising** | Art | **Automotive Technology** | **Aviation Maintenance Technology** | Biology | Business | Computer Information Systems | **Dental Assisting*** | Diesel Mechanics | *English for Speakers of Other Languages* | Mathematics | Political Science | Psychology | Sociology



Laney College

laney.edu

11,300 students

Architecture | Athletics | Business | Communications | Computer Information Systems | Construction Management | **Cosmetology** | Counseling | **Culinary Arts** | Earth & Human Sciences | Economics | **Engineering** | English | *English for Speakers of Other Languages* | Graphic Design | Journalism | **Mathematics** | Music | Physics | Theatre Arts



Merritt College

merritt.edu

7,600 students

Administration of Justice | African American Studies | Anthropology | Art | Business | **Child Development** | **Cybersecurity** | Health Professions & Occupations | **Landscape Horticulture** | Liberal Arts | **Nursing*** | Nutrition & Dietetics | **Paralegal Studies** | Radiologic Science* | Real Estate

*Requires separate admissions

CAREER TECHNICAL EDUCATION

For a complete list of programs, visit peralta.edu/cte



Building Construction & Trades



Information & Communication Technology



Digital Media & Communications



Engineering, Design & Production



Environment & Sustainability



Healthcare & Bioscience



Hospitality, Retail & Tourism



Business & Entrepreneurship



Personal Services



Public & Human Services



Public Service & Law



Transportation & Logistics