

MAY+ JUNE
2021



LANEY FACILITIES AND TECHNOLOGY UPDATE

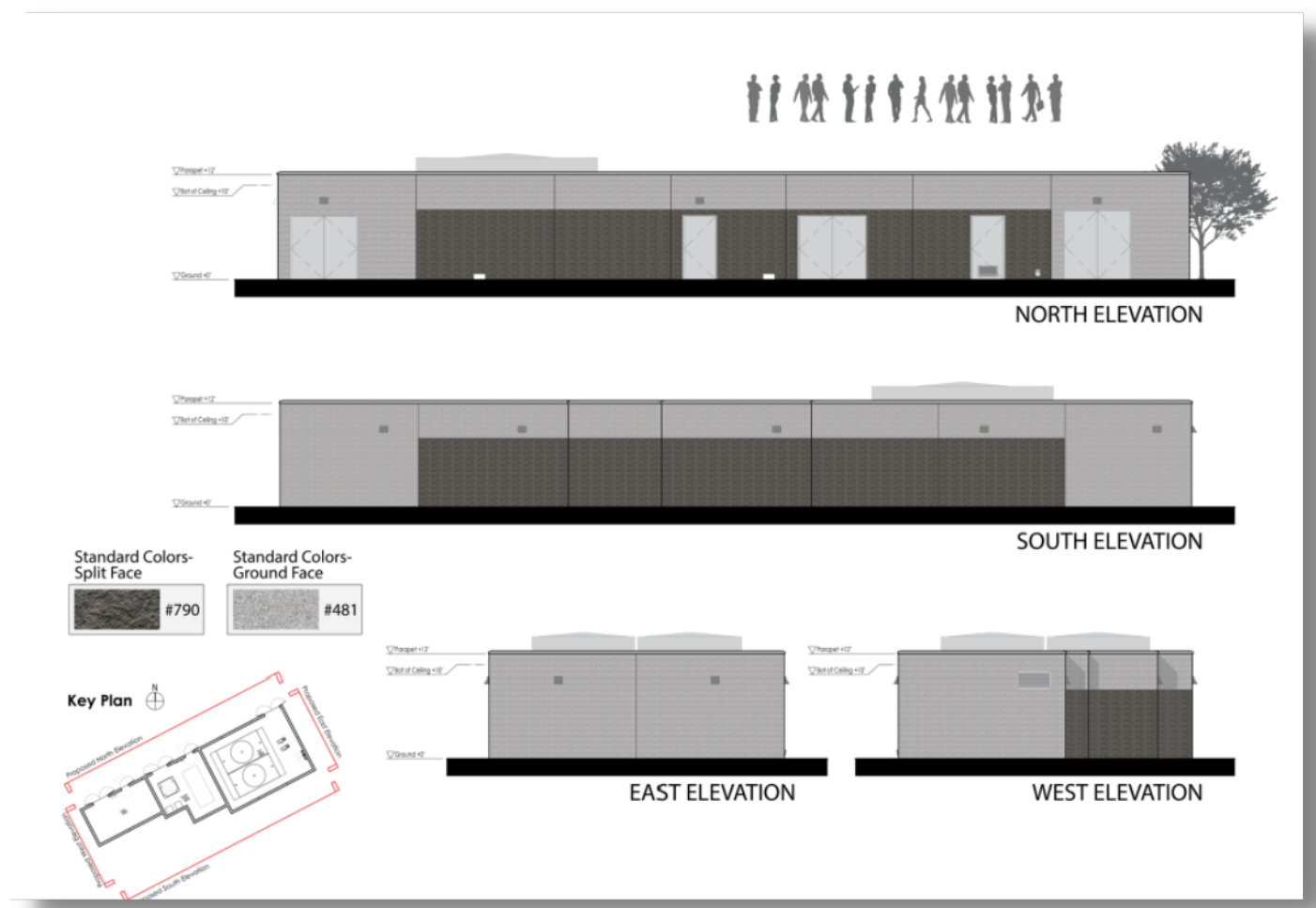
WORKING TOGETHER TO SUPPORT OUR STUDENTS & THE CAMPUS COMMUNITY

UNDER CONSTRUCTION AND COMING SOON

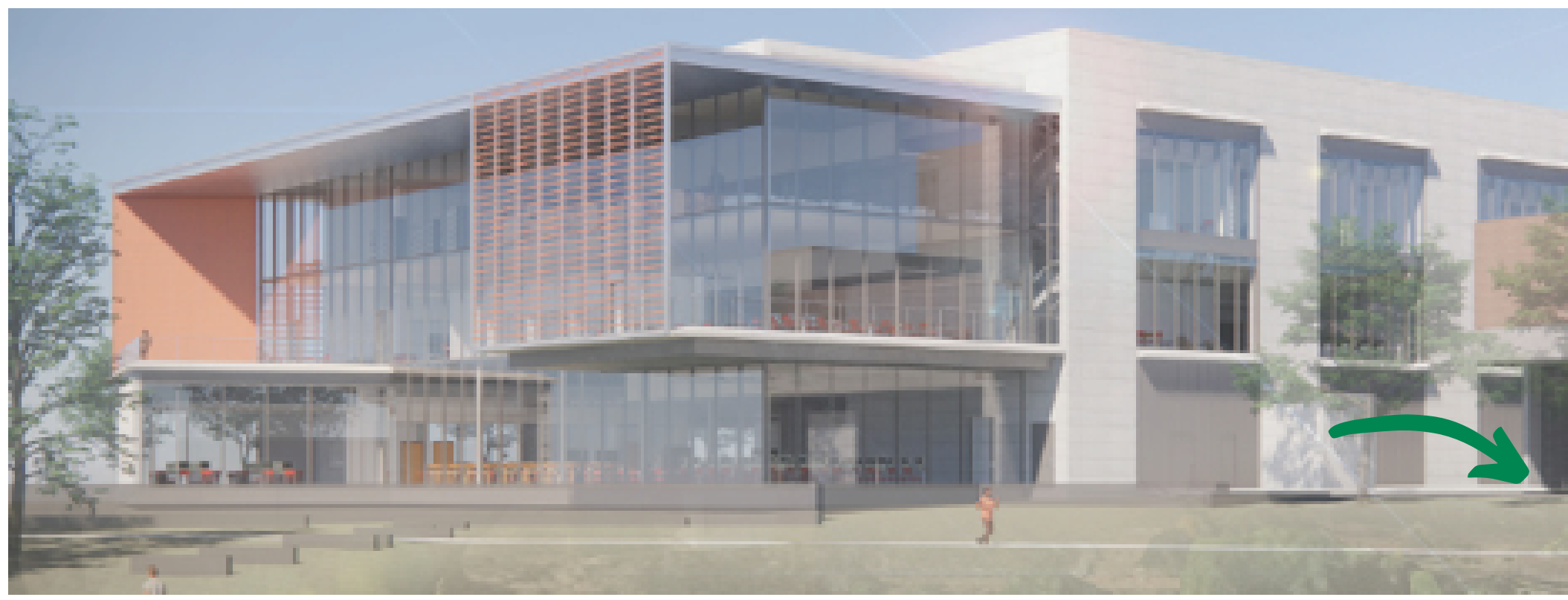


← Theater Modernization

Central Utility Plant →



The Library Learning Resource Center, Theater modernization and Central Utility Plan projects are all awaiting approval from DSA. There will be a lot of construction activity beginning in late fall and through most of 2022.



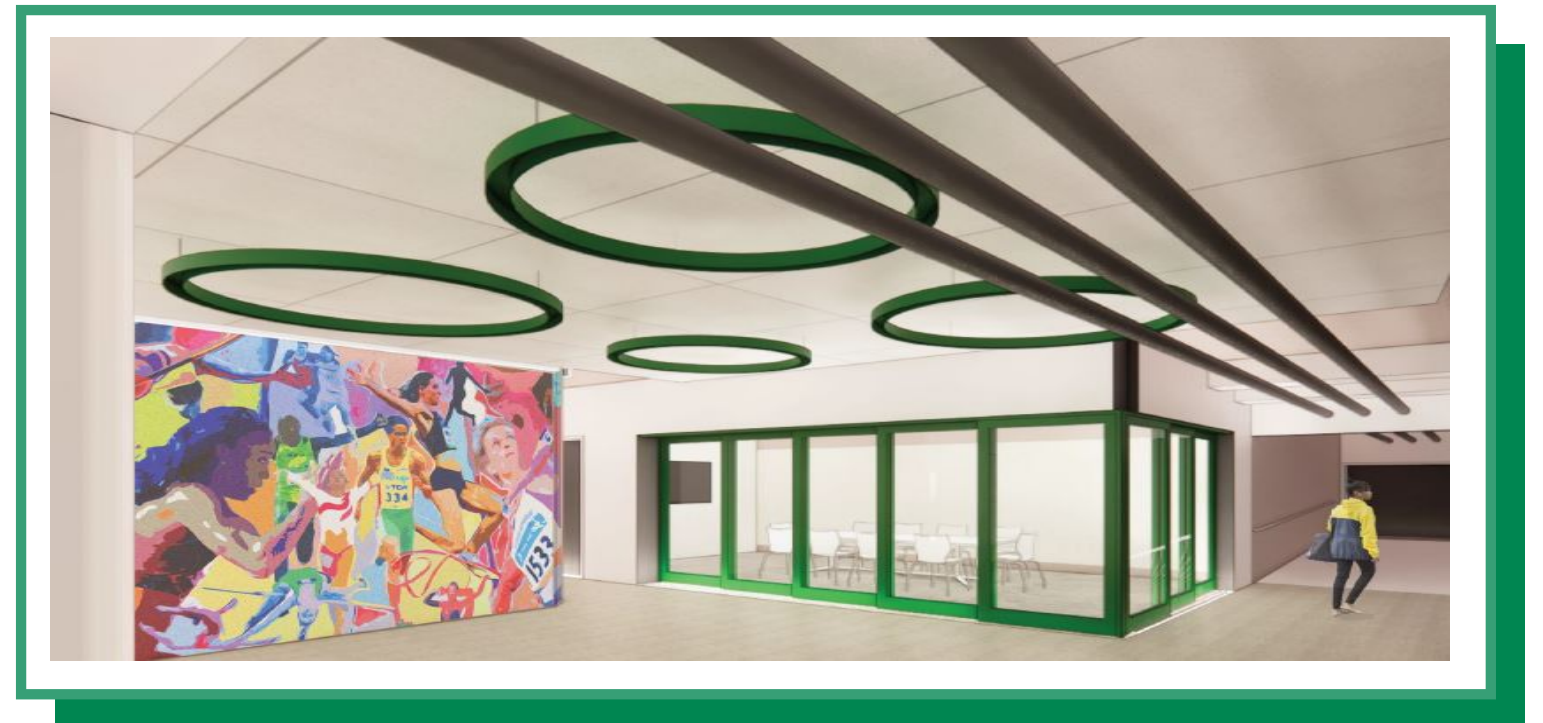
← Library Learning Resource Center



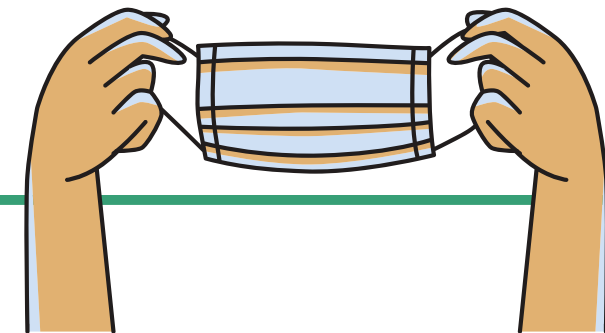
Locker Room Modernization

Scheduled for DSA in August.

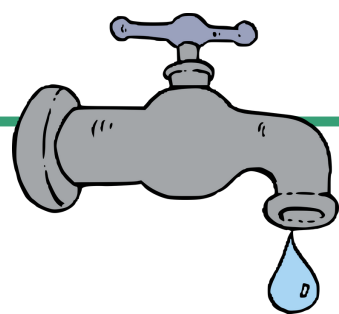
FACILITIES UPDATE



Universal Access bathrooms:
We've added new locks on most of the universal access bathrooms for better privacy and security. We now have universal access bathrooms in Upper A, Lower B area (near the pool), Pool deck, Lower F, Upper G, the Tower Building and the Field House.



Planning for fall face to face classes continues. While more updates are expected from OSHA and the district, we're planning on having all assigned rooms ready for occupancy. If you have special needs for your fall classroom or lab please work with your dean.



Leak Remediation Phase III:
this final phase of leak remediation will likely begin in late August with plans to be complete prior to the spring semester.

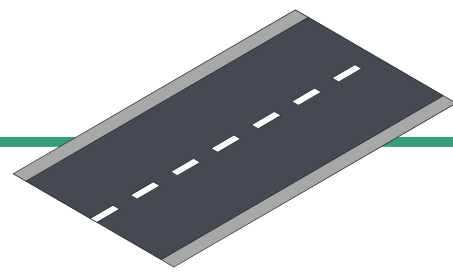


Work orders - work requests can be submitted by emailing the Laney Business Office at lbusinessoffice@peralta.edu or texting 510-599-9411.

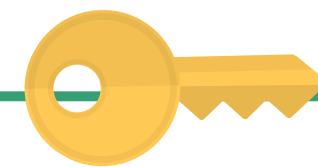
FACILITIES UPDATE.



Parking permits should be available for fall semester. Full time employees should complete this application. Part-time or hourly faculty or staff should use this form. Permit applications are also available on the Laney Business Office website.



The perimeter paving will commence in early July. Most on-campus parking will not be available. Faculty and staff coming to campus should plan on parking in the parking lot.



Key requests should be submitted to the business office and must be approved by the dean or manager of the area prior to submittal. Forms are available on the Laney Business Office website.



Eagle Village will be coming down sometime in the next month.

Contractors will begin preparing the tennis court area in anticipation of the new Eagle Village portables. The new village has been delayed slightly. They should be installed by October.

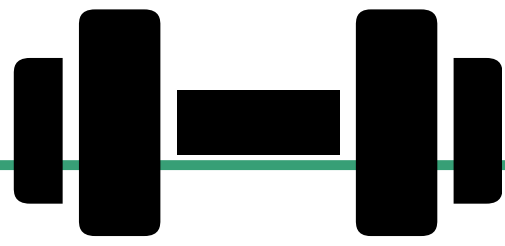


The upper garden area behind the bistro will be removed to make way for construction of the new library and EBMUD pipes. The fruit trees will be relocated to the district. The roses and other flowers will be planted around campus.



Facilities Planning Committee meets the 1st Monday of the month during the fall and spring semesters and meetings are open to everyone. <https://laney.edu/facilitiesplanningcommittee/>

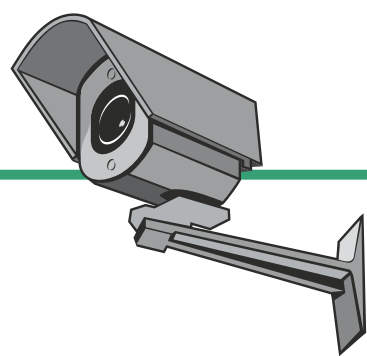
TECHNOLOGY UPDATE



Laney IT is working with some departments to update their infrastructure. The Athletics Weight Room and Gym areas will have updated electrical and network cabling to support their equipment safely. It will also have new TV monitors.



The Laney Bistro and Cafeteria are being updated with new cash registers and an updated Point of Sale system.



Laney IT is working with District IT to migrate security camera servers to the District network.



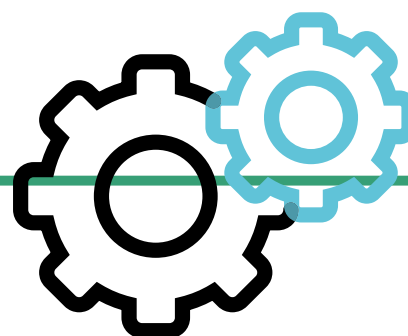
IT is working with the Cosmetology department to implement a new program for tracking student hours, tasks, and attendance. This will be launched in Fall for some students with a complete migration planned for next Spring.



Over the Summer, IT will be working on updating desktops in several areas- Financial Aid, Gateway to College and Welcome Center. Areas that currently have leased printers will also be replaced prior to the Fall term.



Laney IT is working with facilities on clearing e-waste from campus. If you have old technology equipment in your areas, please let us know and we will pick it up.



Laney IT Continues to provide remote tech support and limited on-site support. Please contact us at laneyhelpdesk@peralta.edu. For PeopleSoft class scheduling questions, faculty should email Laneyscheduler@peralta.edu. If you need assistance with website changes, your website account or WordPress training please email laneywebhelp@peralta.edu