

D

C

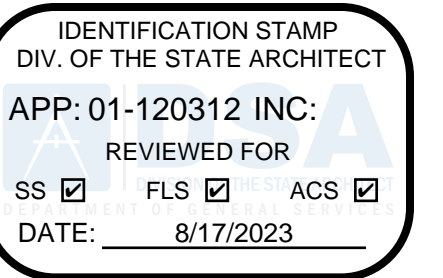
B

A

GENERAL NOTES

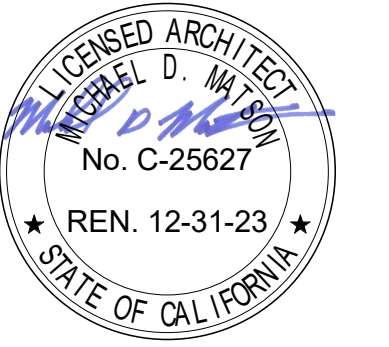
1. FOR LOCATIONS OF STORAGE CABINETS OR WALL MOUNTED SHELVING WHERE NO INTERIOR ELEVATION IS INDICATED, PROVIDE WALL BACKING TOP AND BOTTOM PER DETAIL A3A-551.
2. PROVIDE WASTE RECEPTACLES (NOT SHOWN THIS PLAN) IN QUANTITIES AND LOCATIONS DESCRIBED BY SPECIFICATION SECTION 10 28 00 - SANITARY ACCESSORIES.
3. PROVIDE MAIL SLEEVES (NOT SHOWN THIS PLAN) IN QUANTITIES AND LOCATIONS DESCRIBED BY SPECIFICATION SECTION 10 55 00 - OFFICE SPECIALTIES. COORDINATE EACH UNIT'S FINAL LOCATION AND PLACEMENT IN THE FIELD WITH ARCHITECT.
4. PROVIDE COAT HOOKS (NOT SHOWN THIS PLAN) IN QUANTITIES AND LOCATIONS DESCRIBED BY SPECIFICATION SECTION 10 55 00 - OFFICE SPECIALTIES. COORDINATE ALL NON-DOOR INSTALLATION LOCATIONS AND PLACEMENT (E.G. WHERE GLASS DOORS OCCUR) IN THE FIELD WITH ARCHITECT.

DSA APPROVAL

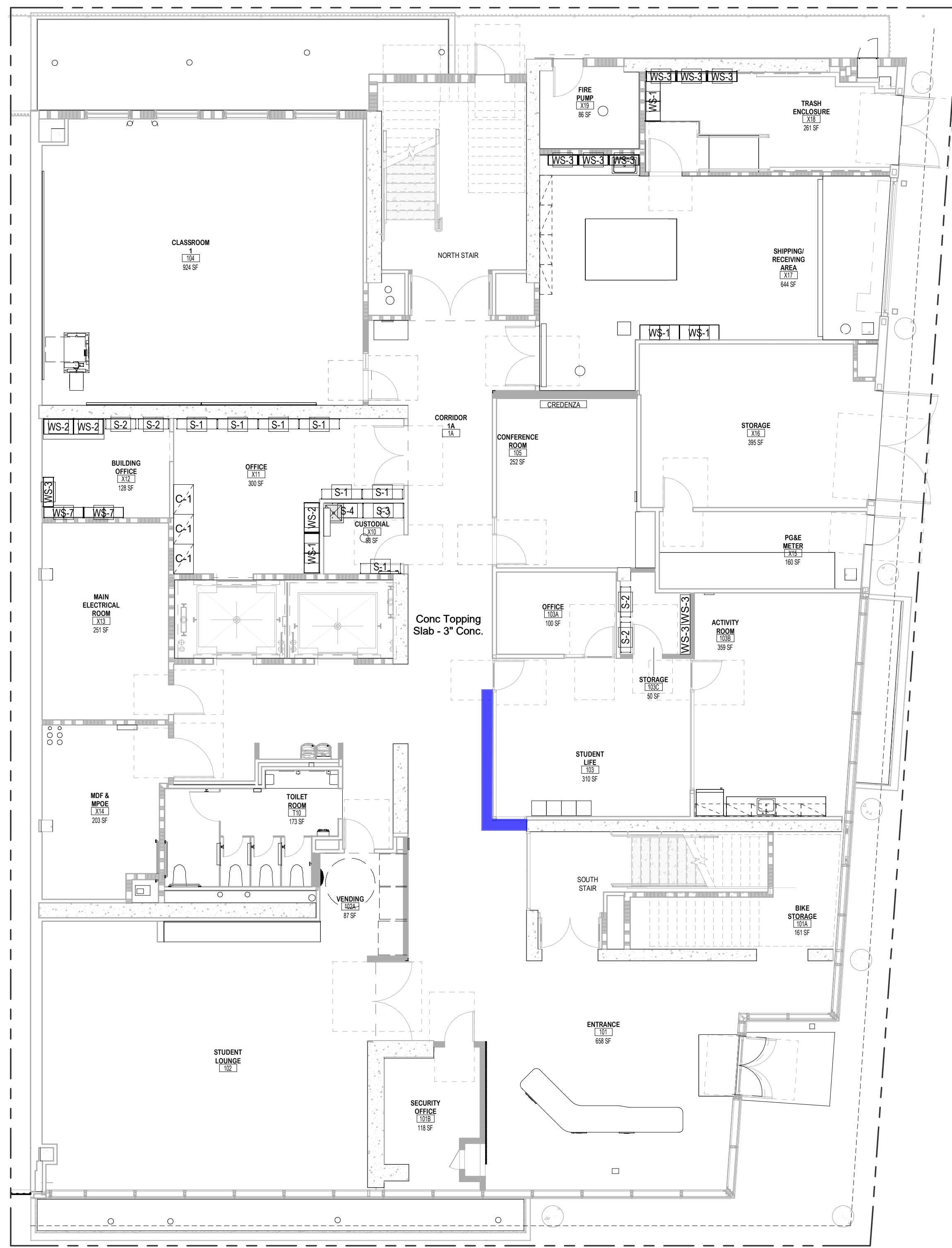


RATCLIFF

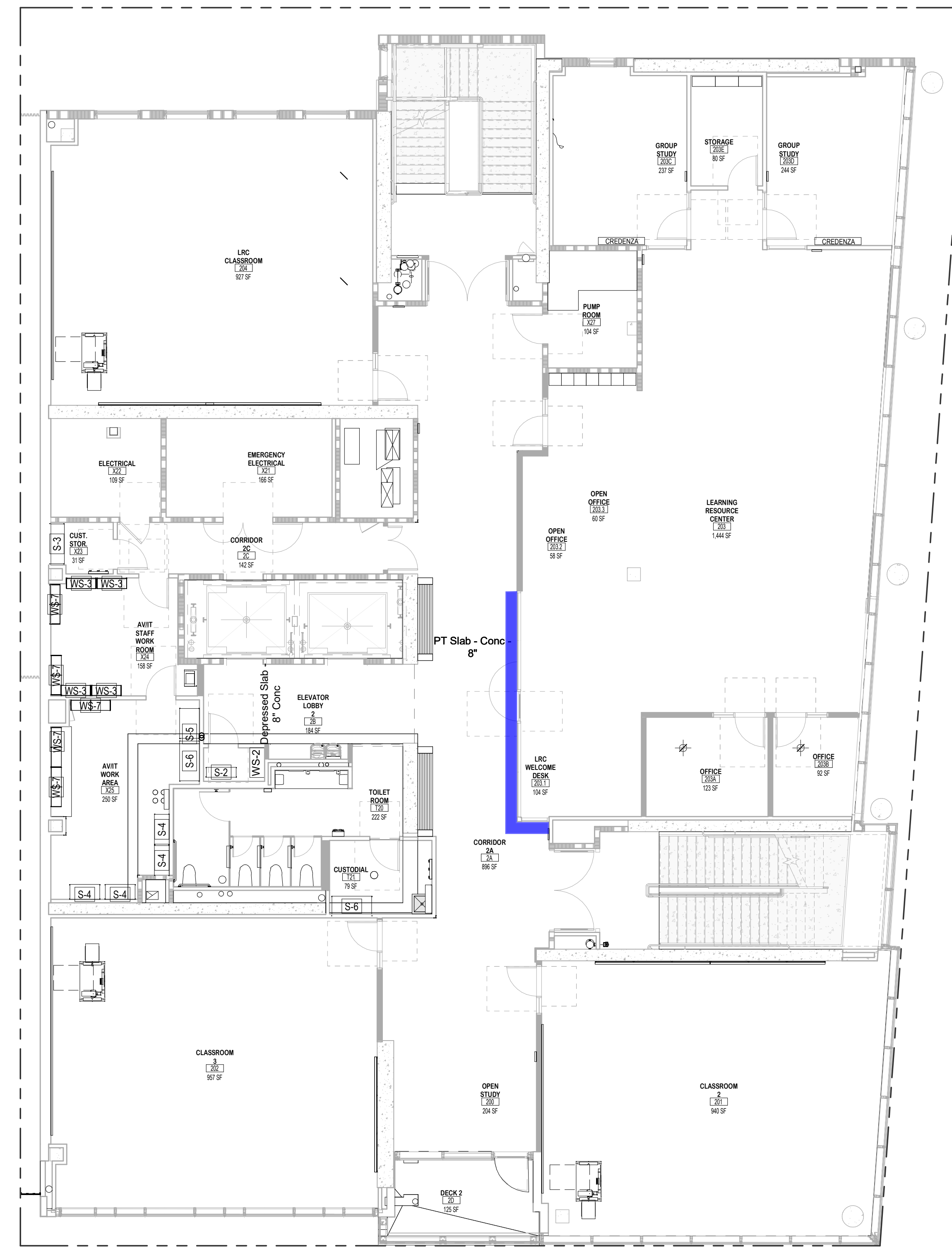
5856 Doyle Street
Emeryville, CA 94608
Tel 510 899 6400
www.ratcliffarch.com



ISSUE SCHEDULE	NO.	DATE
OAC-Appvd Design Chgs	D	08/12/22
DSA "V2" Submittal	E	02/13/23
DSA "V3" Submittal	F	05/05/23

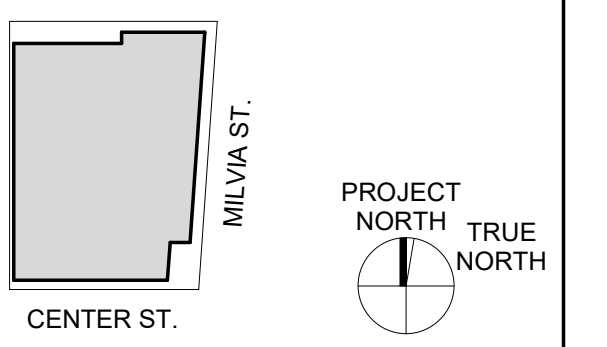


Level 1 - Student Life 103



Level 2 - Learning Resource Center 203

KEY PLAN



PERALTA COMMUNITY COLLEGE DISTRICT BERKELEY CITY COLLEGE
2118 MILVIA STREET
BERKELEY, CA. 94704

BCC WEST

SHEET TITLE:

FURNITURE PLANS - LEVELS 1 & 2

SCALE: As indicated
PROJECT NUMBER: 21415

SHEET NUMBER:

A-701

D

C

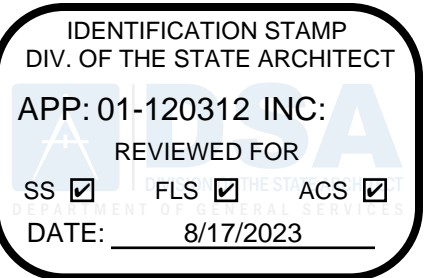
B

A

GENERAL NOTES

1. FOR LOCATIONS OF STORAGE CABINETS OR WALL MOUNTED SHELVING WHERE NO INTERIOR ELEVATION IS INDICATED, PROVIDE WALL BACKING TOP AND BOTTOM PER DETAIL A3/A-551.
2. PROVIDE WASTE RECEPTACLES (NOT SHOWN THIS PLAN) IN QUANTITIES AND LOCATIONS DESCRIBED BY SPECIFICATION SECTION 10 28 00 - SANITARY ACCESSORIES.
3. PROVIDE MAIL SLEEVES (NOT SHOWN THIS PLAN) IN QUANTITIES AND LOCATIONS DESCRIBED BY SPECIFICATION SECTION 10 55 00 - OFFICE SPECIALTIES. COORDINATE EACH UNIT'S FINAL LOCATION AND PLACEMENT IN THE FIELD WITH ARCHITECT.
4. PROVIDE COAT HOOKS (NOT SHOWN THIS PLAN) IN QUANTITIES AND LOCATIONS DESCRIBED BY SPECIFICATION SECTION 10 55 00 - OFFICE SPECIALTIES. COORDINATE ALL NON-DOOR INSTALLATION LOCATIONS AND PLACEMENT (E.G. WHERE GLASS DOORS OCCUR) IN THE FIELD WITH ARCHITECT.

DSA APPROVAL

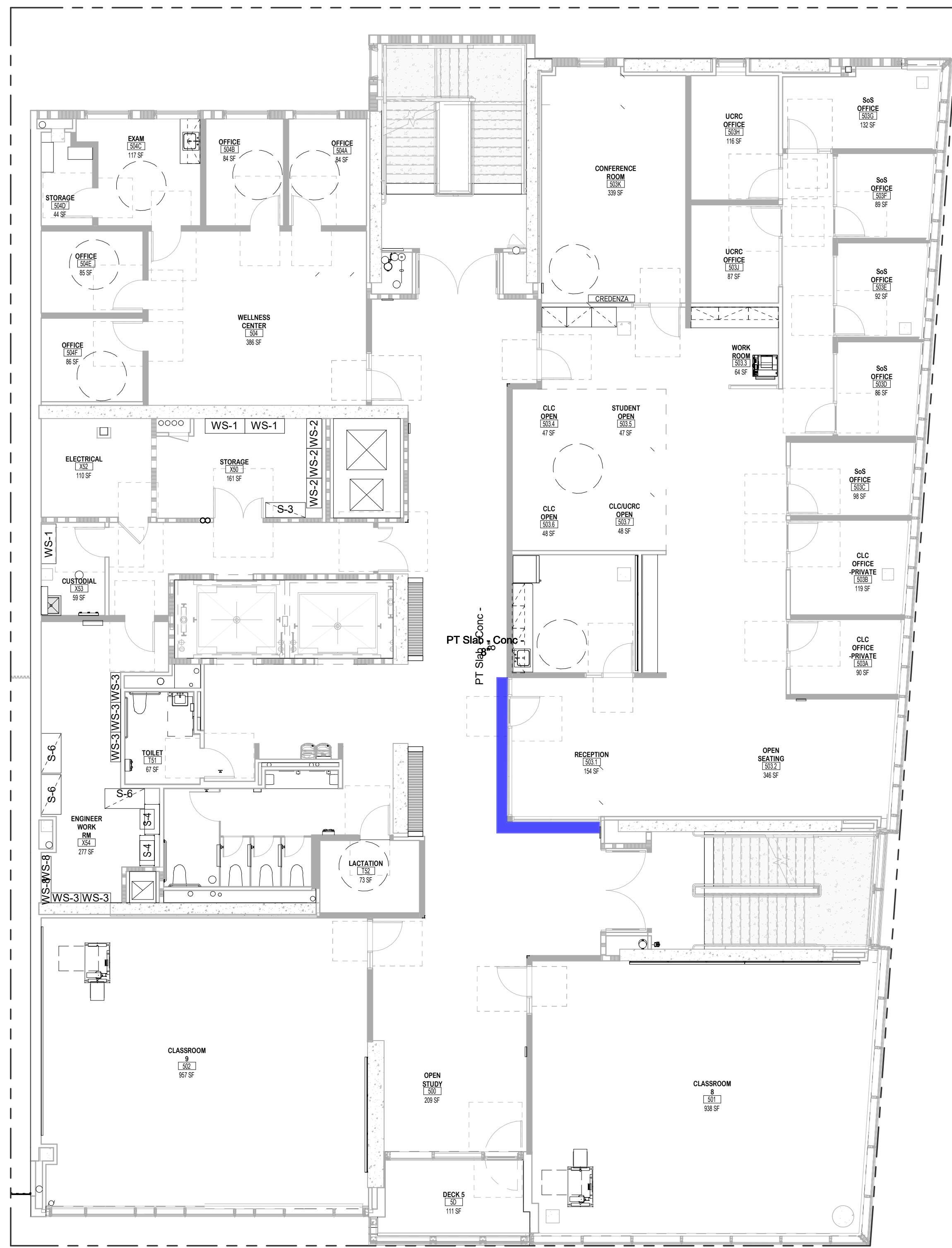


RATCLIFF

5856 Doyle Street
Emeryville, CA 94608
Tel 510 899 6400
www.ratcliffarch.com

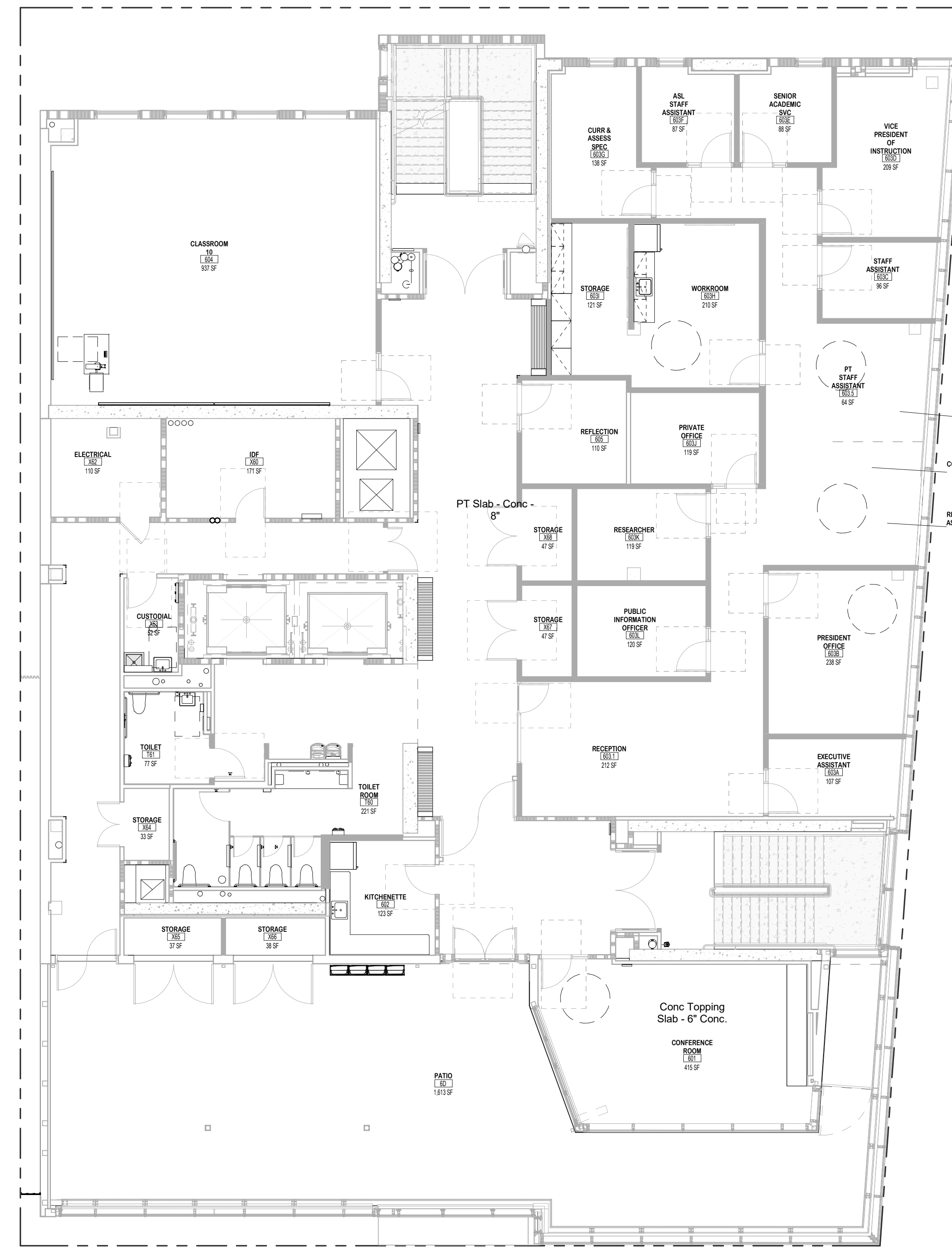


ISSUE SCHEDULE	NO.	DATE
OAC-Appvd Design Chgs	D	08/12/22
DSA "V2" Submittal	E	02/13/23
DSA "V3" Submittal	F	05/05/23



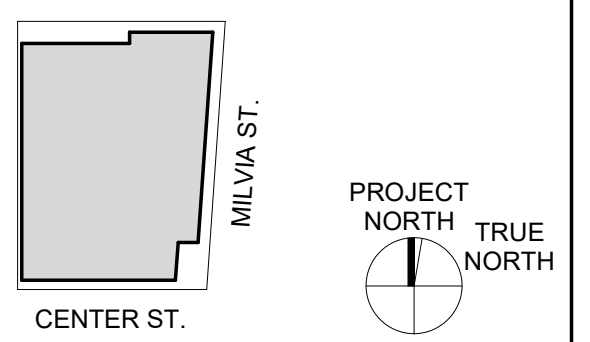
Level 5 - Society of Scholars

A1 LEVEL 5 - FLOOR PLAN
1/8" = 1'-0"



A2 LEVEL 6 - FLOOR PLAN
1/8" = 1'-0"

KEY PLAN



PERALTA COMMUNITY COLLEGE DISTRICT BERKELEY CITY COLLEGE
2118 MILVIA STREET
BERKELEY, CA. 94704

BCC WEST

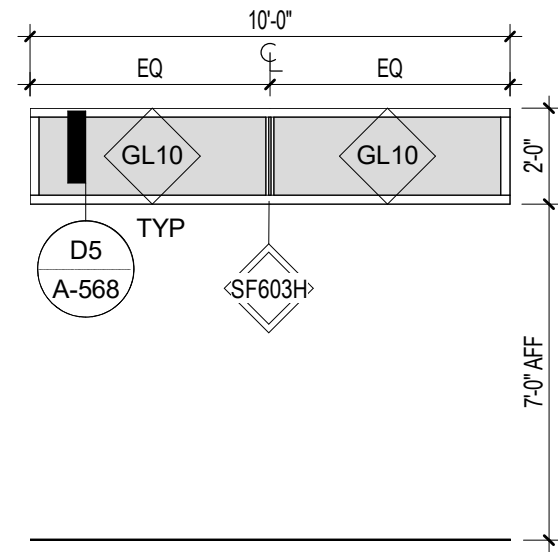
SHEET TITLE:
FURNITURE PLANS - LEVELS 5 & 6

SCALE: As indicated
PROJECT NUMBER: 21415

SHEET NUMBER: **A-703**

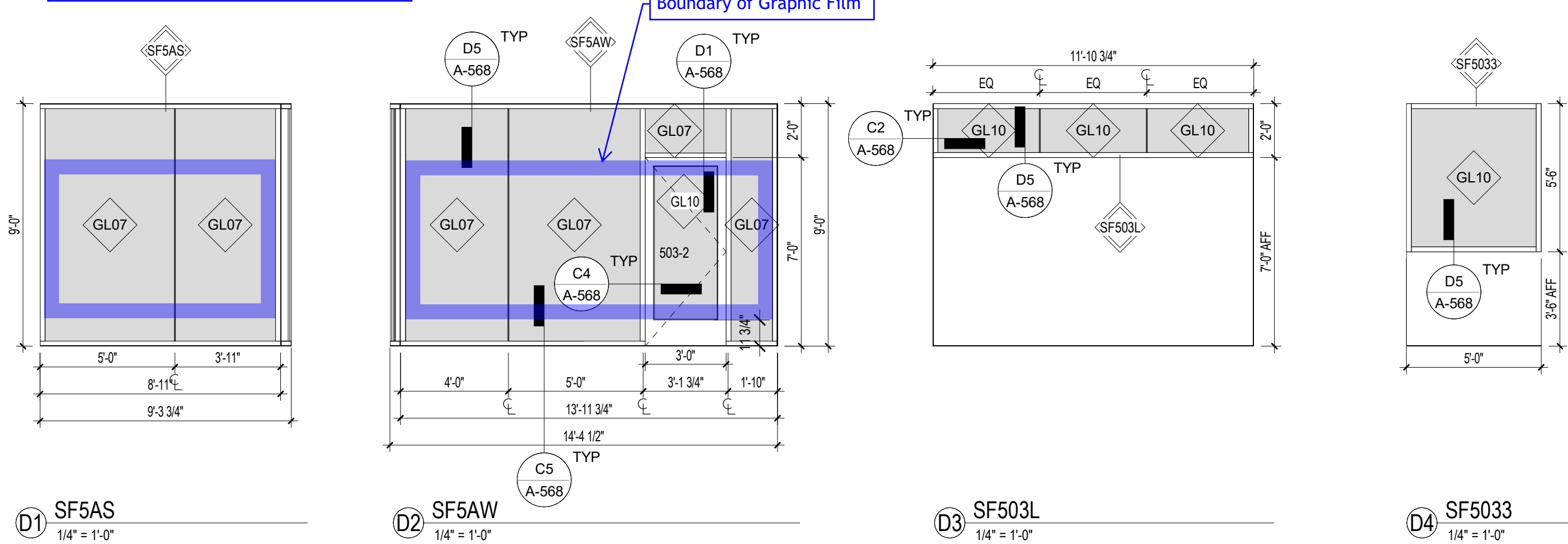
05/05/2023 DSA "V3" SUBMITTAL

D



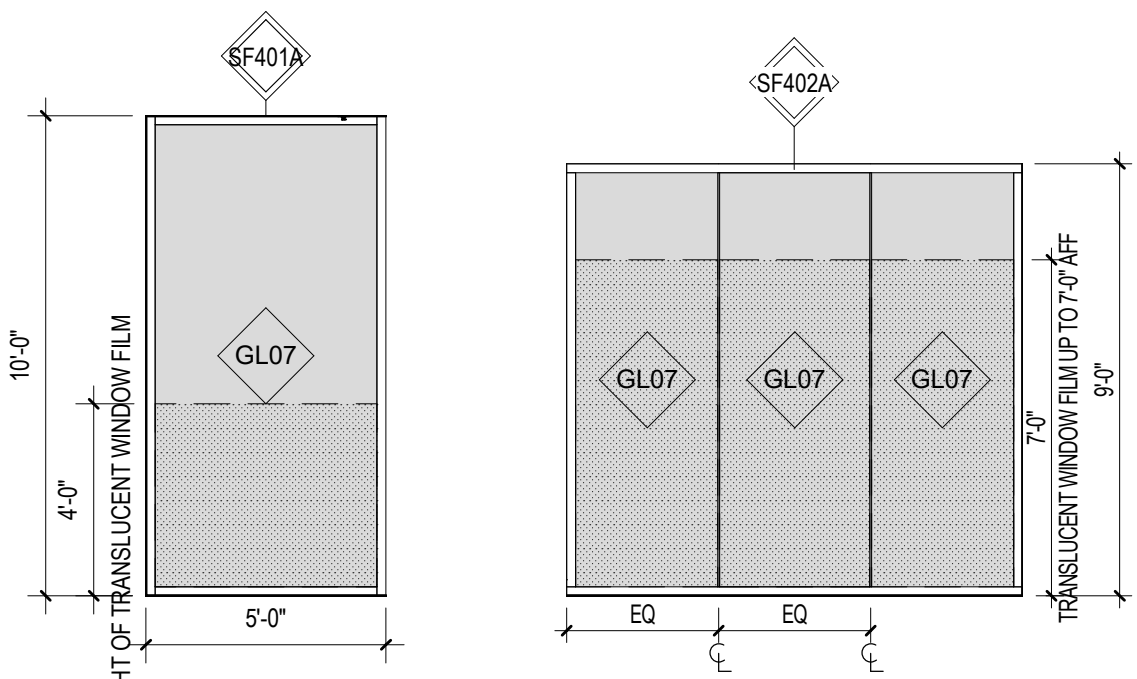
E1 SF603H1
1/4" = 1'-0"

Level 5 - Society of Scholars



D1 SF5AS 1/4" = 1'-0" D2 SF5AW 1/4" = 1'-0" D3 SF503L 1/4" = 1'-0" D4 SF5033 1/4" = 1'-0"

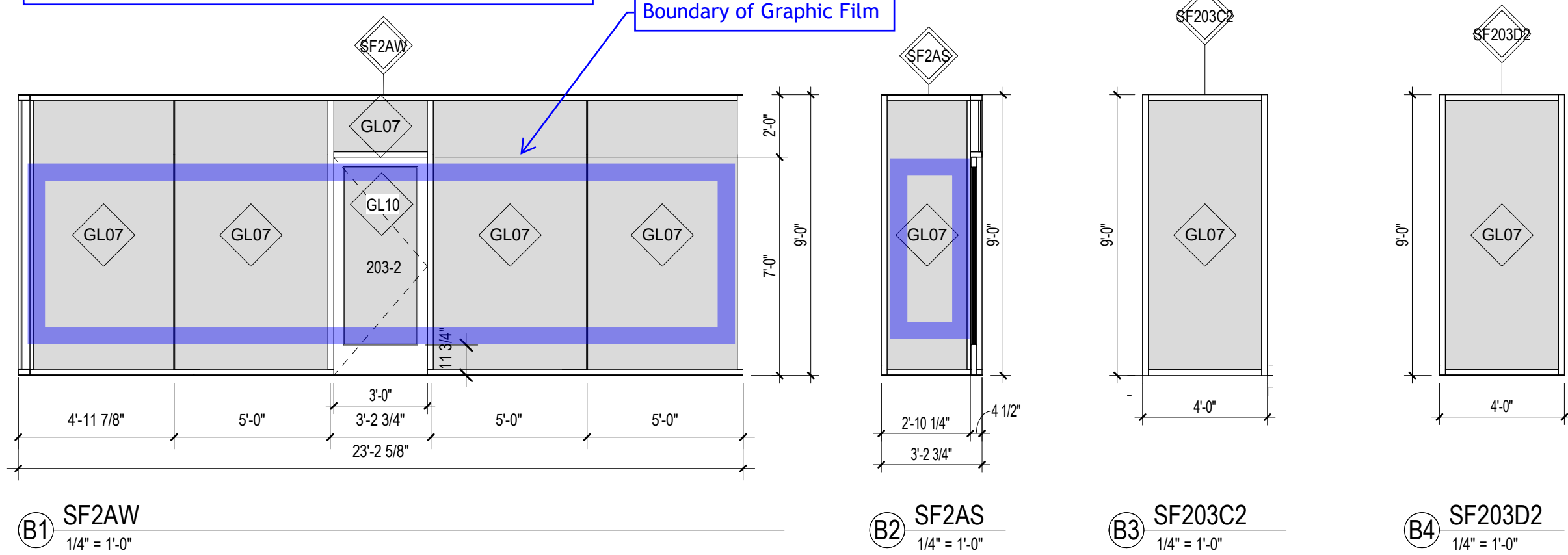
C



C1 SF401A 1/4" = 1'-0" C2 SF402A 1/4" = 1'-0"

B

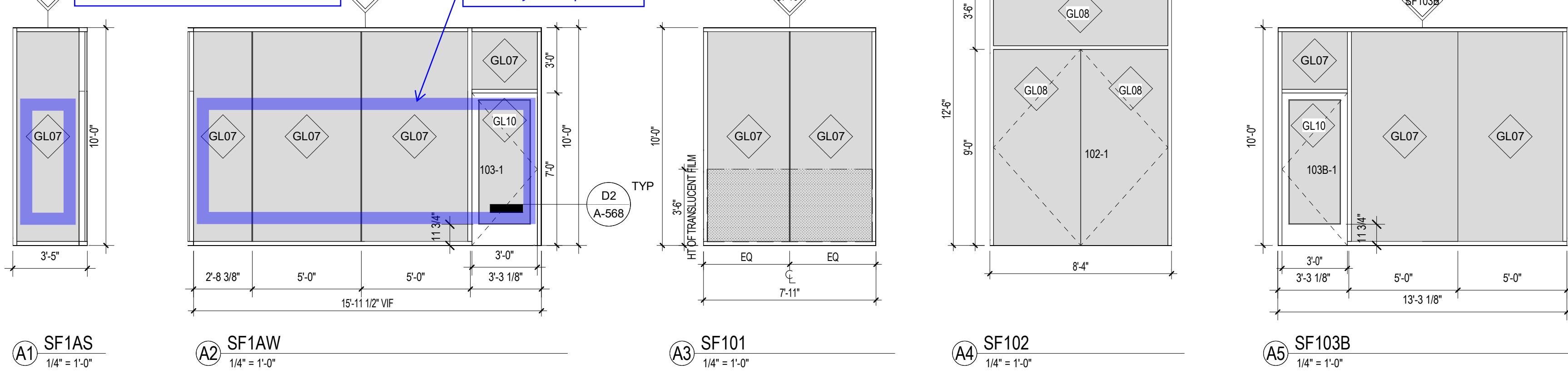
Level 2 - Learning Resource Center 203



B1 SF2AW 1/4" = 1'-0" B2 SF2AS 1/4" = 1'-0" B3 SF203C2 1/4" = 1'-0" B4 SF203D2 1/4" = 1'-0"

A

Level 1 - Student Life 103



A1 SF1AS 1/4" = 1'-0" A2 SF1AW 1/4" = 1'-0" A3 SF101 1/4" = 1'-0" A4 SF102 1/4" = 1'-0" A5 SF103B 1/4" = 1'-0"

1

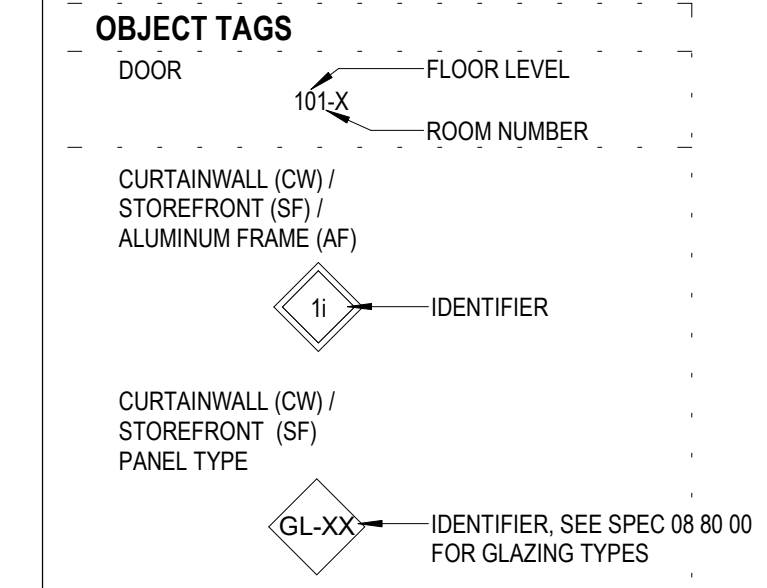
2

3

4

5

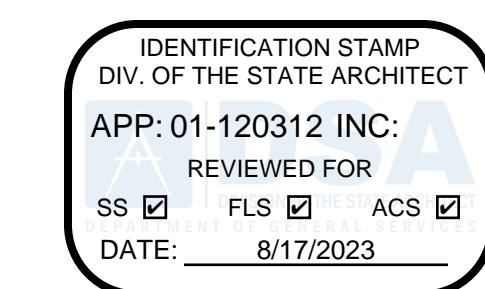
TAGS



SHEET NOTES

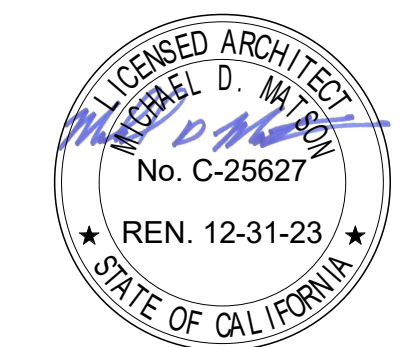
- SEE SHEET A-601 FOR DOOR SCHEDULE AND LEGENDS.
- SEE SHEET A-610 FOR FINISH SCHEDULE.
- SEE DOOR SCHEDULE AND DOOR TYPE & FRAME LEGENDS ON SHEET A-601 FOR ALL DOORS AND FRAME TYPES IN PROJECT.
- ALL SYSTEMS THIS SHEET TO BE SUBMITTED TO DSA FOR APPROVAL AS DEFERRED SUBMITTAL - SEE G-002 & SPEC SECTION 08 41 13.

DSA APPROVAL



RATCLIFF

5856 Doyle Street
Emeryville, CA 94608
Tel 510 899 6400
www.ratcliffarch.com



INTERIOR STOREFRONT SCHEDULE

MARK	SF HEIGHT	SF LENGTH	WALL HEAD CONFIGURATION	Comments
LEVEL 1				
SF1AS	10'-0"	3'-2 3/4"		
SF1AW	10'-0"	16'-1"		CONTAINS DOOR 103-1
SF101	10'-0"	6'-6"		
SF102	12'-6"	6'-4"		CONTAINS DOOR 102
SF103B	10'-0"	13'-3"		CONTAINS DOOR 103B-1
LEVEL 2				
SF203C2	9'-0"	4'-0"		
SF203D2	9'-0"	4'-0"		
LEVEL 4				
SF401A	10'-0"	5'-0"		
SF402A	9'-0"	9'-6"		
LEVEL 5				
SF5AS	9'-0"	6'-11"		
SF5AW	9'-0"	13'-11 3/4"		CONTAINS DOOR 503-2
SF503G	9'-0"	4'-7 3/4"		CONTAINS DOOR 503G-1
SF503L	2'-0"	11'-10 7/8"		
SF5033	5'-6"	5'-0"		
LEVEL 6				
SF603H	2'-0"	10'-0"		

ISSUE SCHEDULE	NO.	DATE
Bid Addendum 2	B	07/25/22
DSA "V2" Submittal	E	02/13/23
DSA "V3" Submittal	F	05/05/23

PERALTA COMMUNITY COLLEGE DISTRICT
BERKELEY CITY COLLEGE
2118 MILVIA STREET
BERKELEY, CA. 94704

BCC WEST

SHEET TITLE:
INTERIOR STOREFRONT SCHEDULE

SCALE: As indicated
PROJECT NUMBER: 21415

SHEET NUMBER: **A-602**

05/05/2023 DSA "V3" SUBMITTAL

Option - A (Preferred Option)



Option A



Note - Graphic Boundaries will be as depicted in highlighted sheets



Learning Resource Center



Option B

Note - Graphic Boundaries will be as depicted in highlighted sheets